

A continuous release is modeled with a steady state (continuous and constant flux emission over time) flux of  $\sim 1.8 \times 10^{-6} \text{ kg m}^{-2} \text{ s}^{-1}$  starting after the spin-up sol.

Animation *Log10\_ppbv\_tracerE\_Ls336\_animation\_cross\_section.gif* shows Tracer -E- abundance (mixing ratio in **Log10** ppbv scale bar) in a Cross Section view (Fig. S1, below) through latitude -4.63 (latitude of the MSL location for sol 305) at Ls336 (mimicking release location E8 shown in Fig.3 of Giuranna et al. 2019).

Note that maximum values of tracer at MSL location happen during sol #1, in agreement with Fig.14 of the manuscript.

X axis in the CrossSection view animation are grid points (1 grid point = 8.9 km distance) and MSL location is around X=41.

Right side of the CrossSection view animation is East and left side is West.

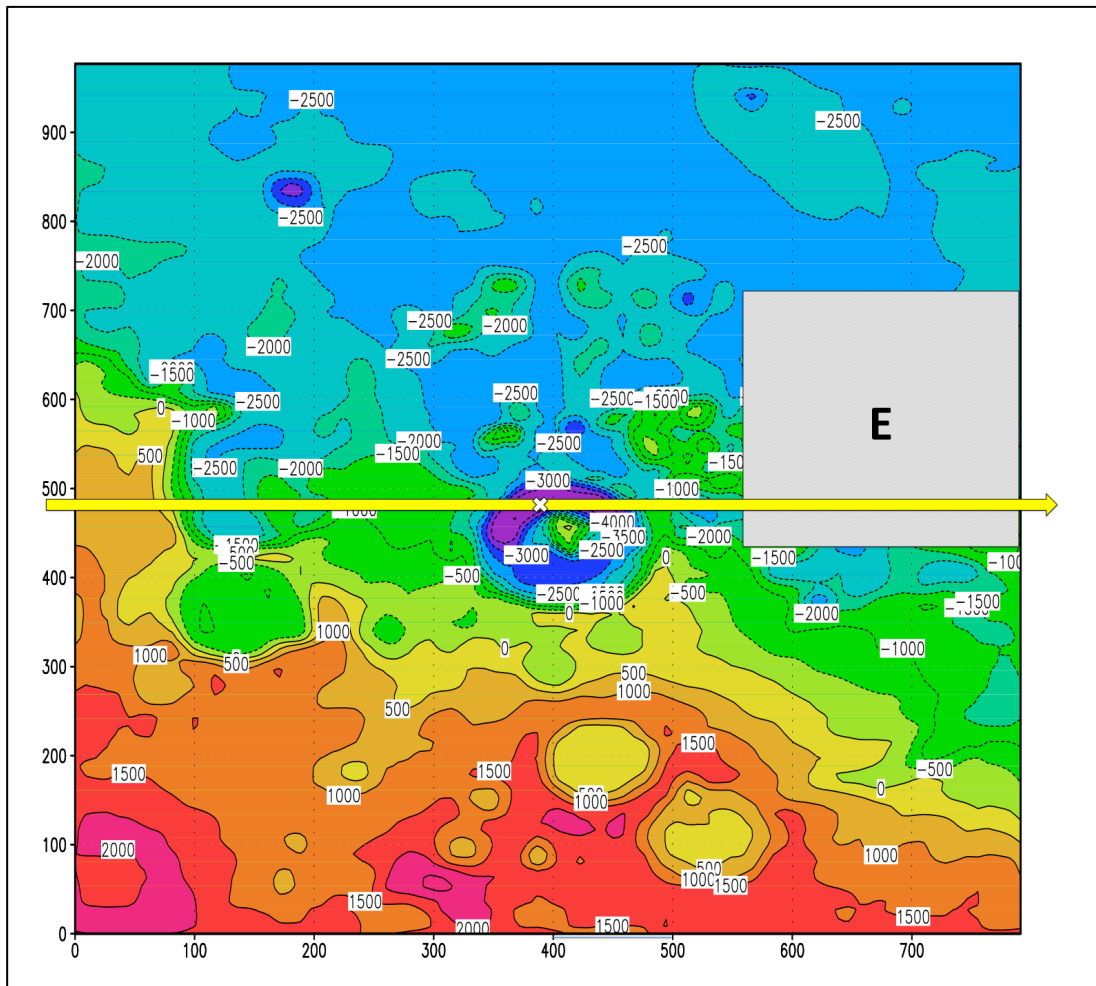


Figure S1. Cross section through latitude -4.63 (latitude of MSL location for sol 305)