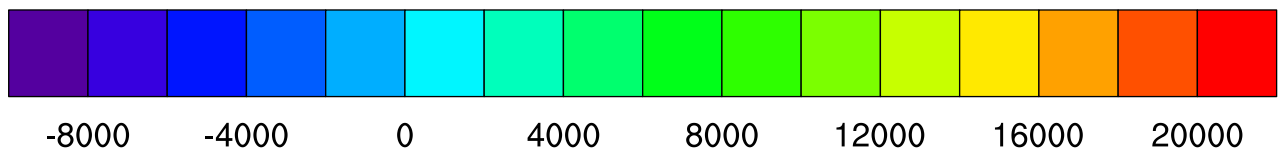
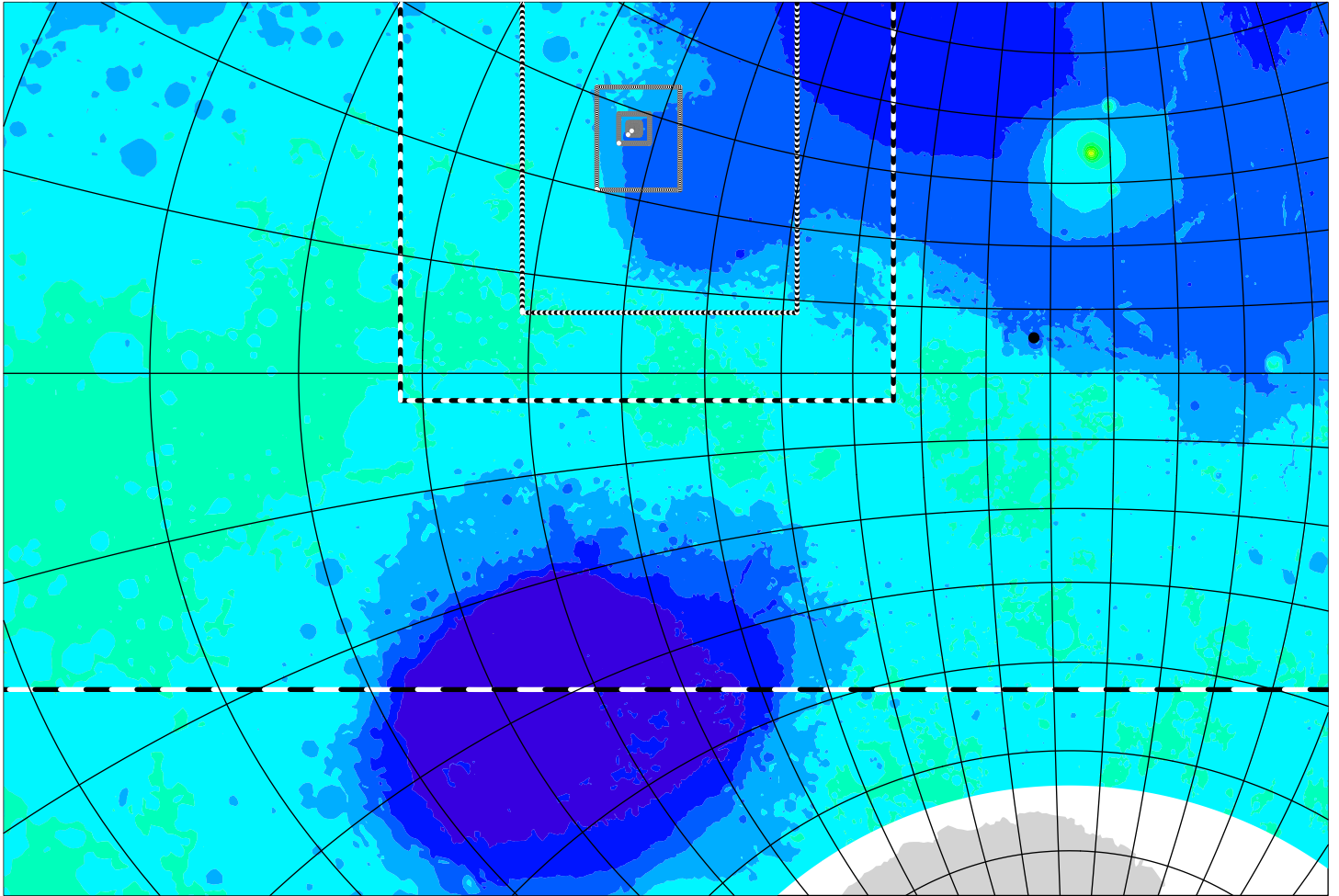


Gale_LS0p4 (grids 1 to 7)

topographic height above areoid

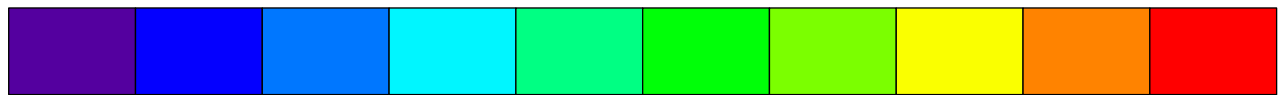
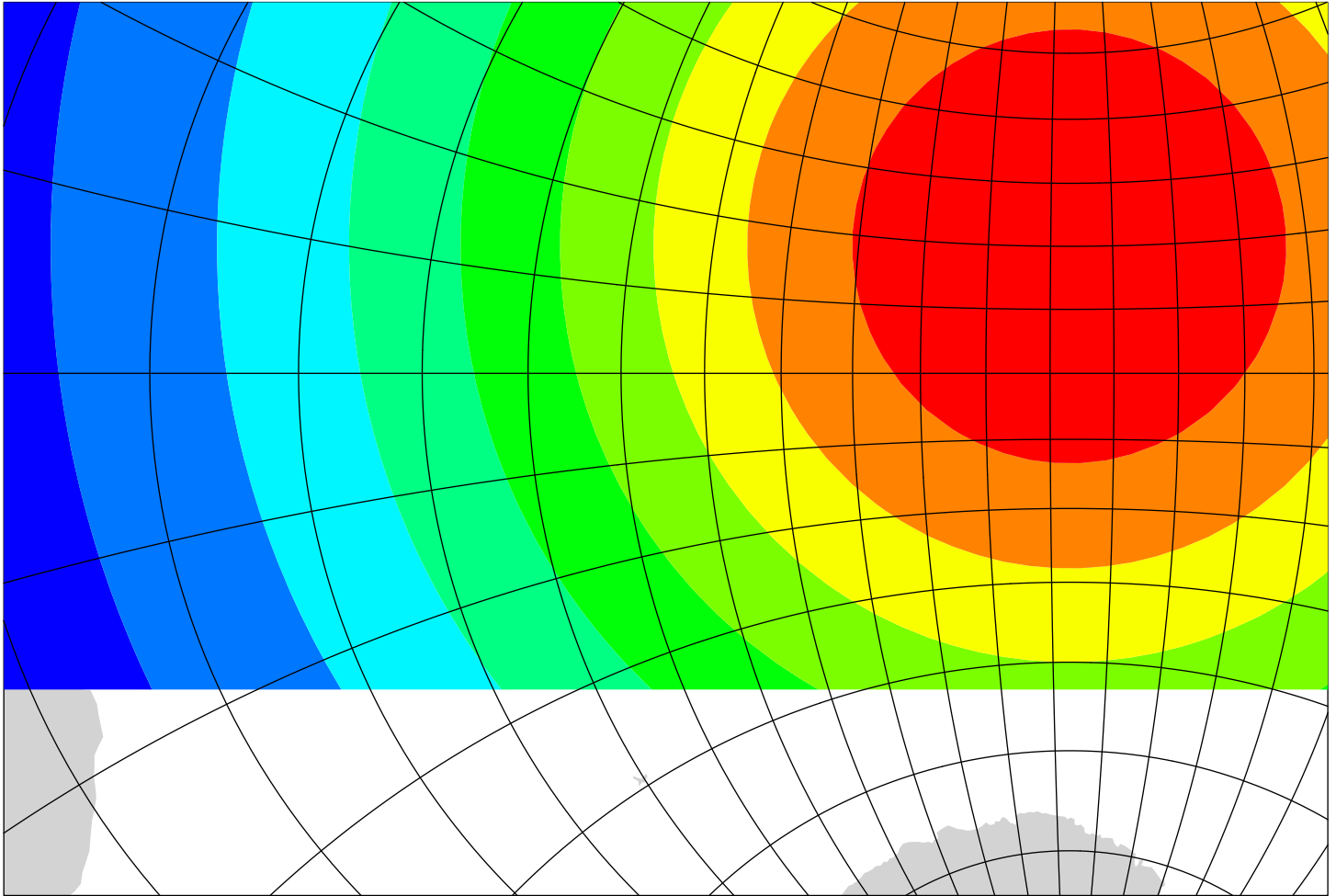
m



Gridspacing distance variation on grid #1

actual gridspacing distance

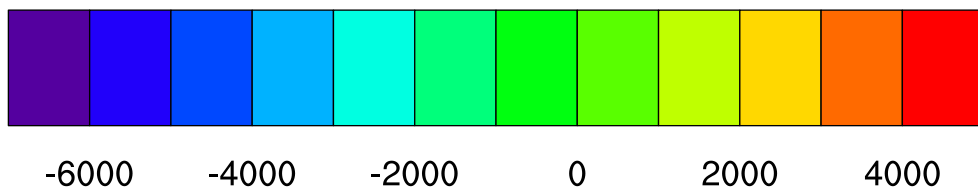
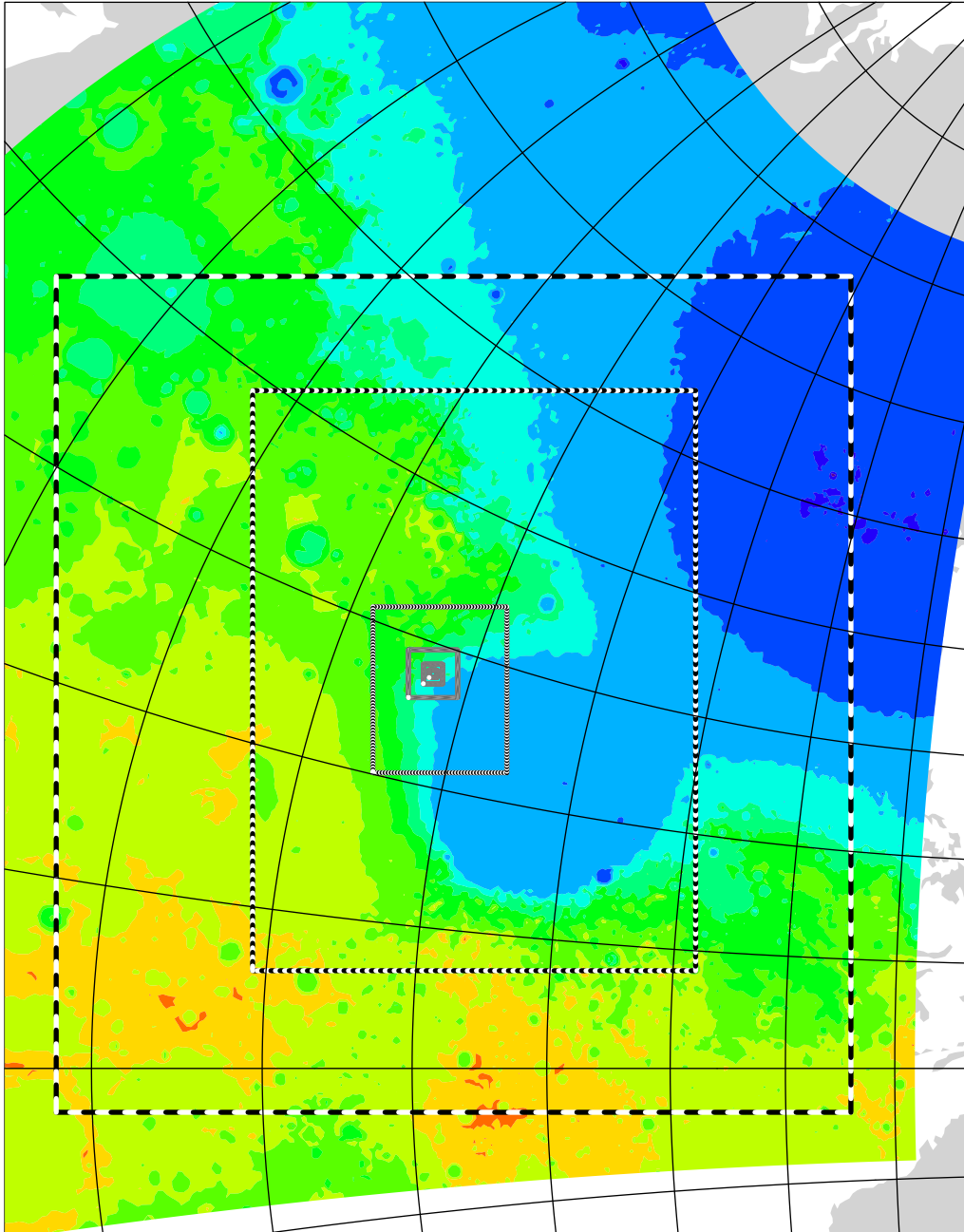
km



60 80 100 120 140 160 180 200 220

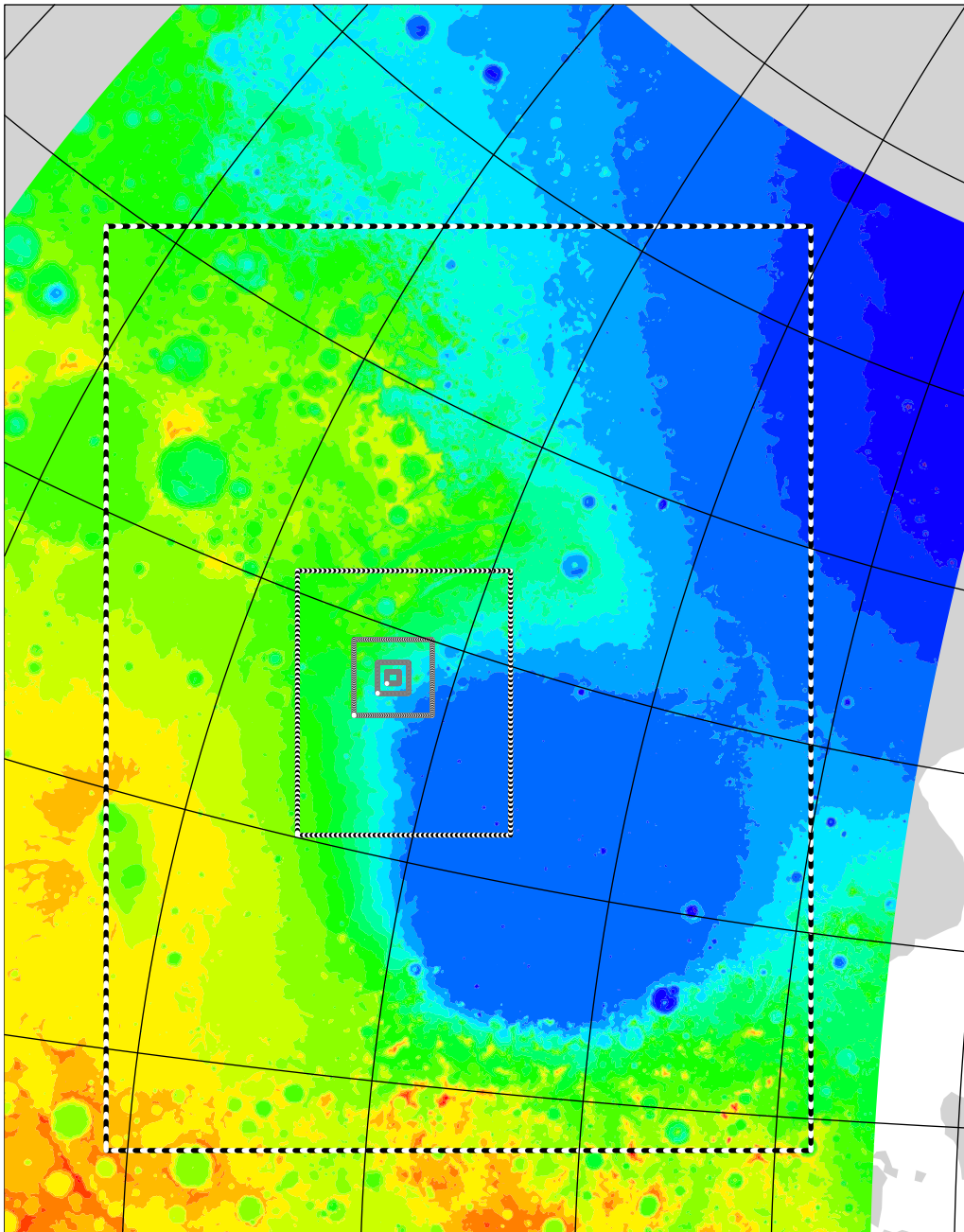
Gale_LS0p4 (grids 2 to 7)

topographic height above areoid m



Gale_LS0p4 (grids 3 to 7)

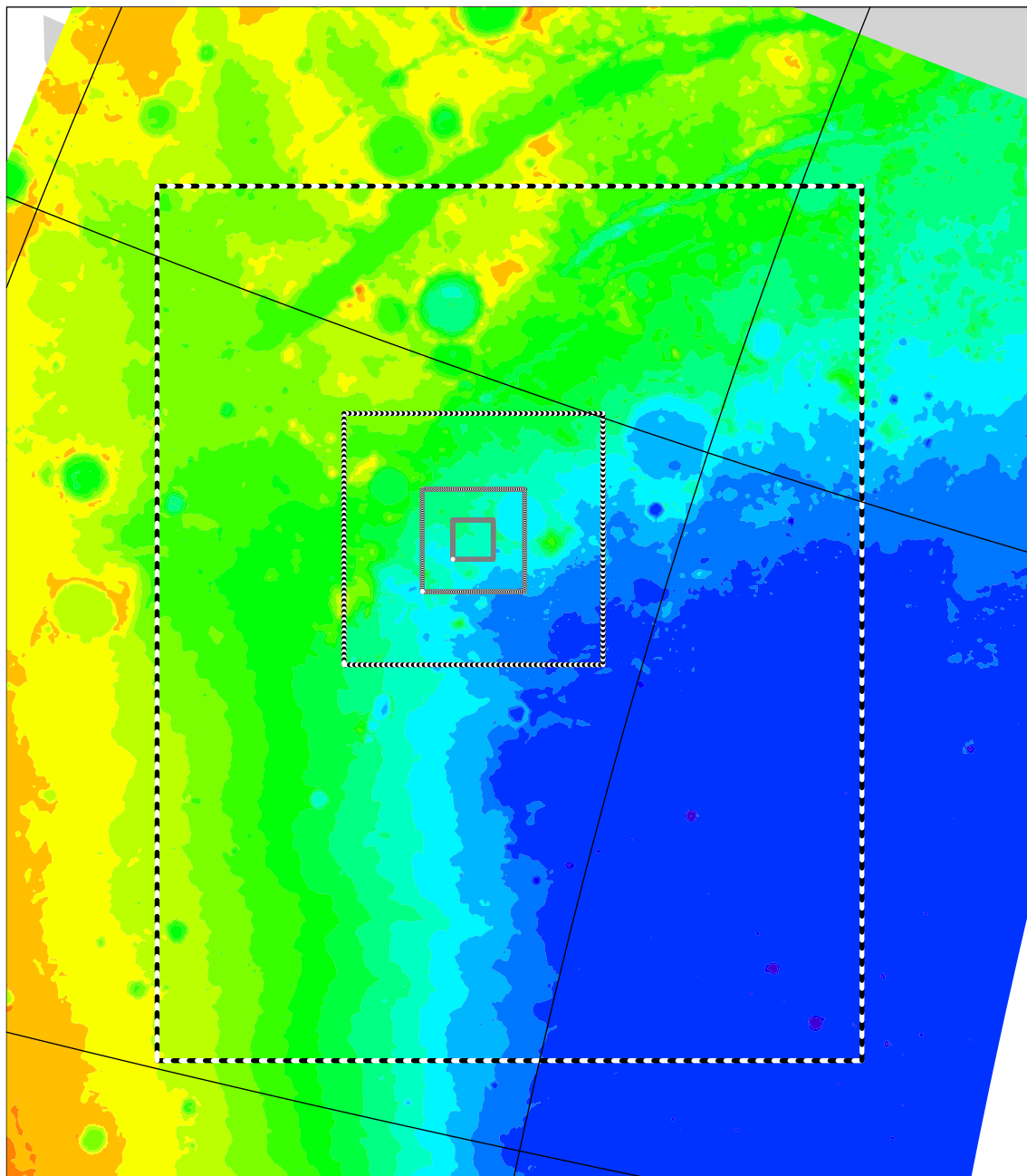
topographic height above areoid m



-4500 -3000 -1500 0 1500 3000

Gale_LS0p4 (grids 4 to 7)

topographic height above areoid m

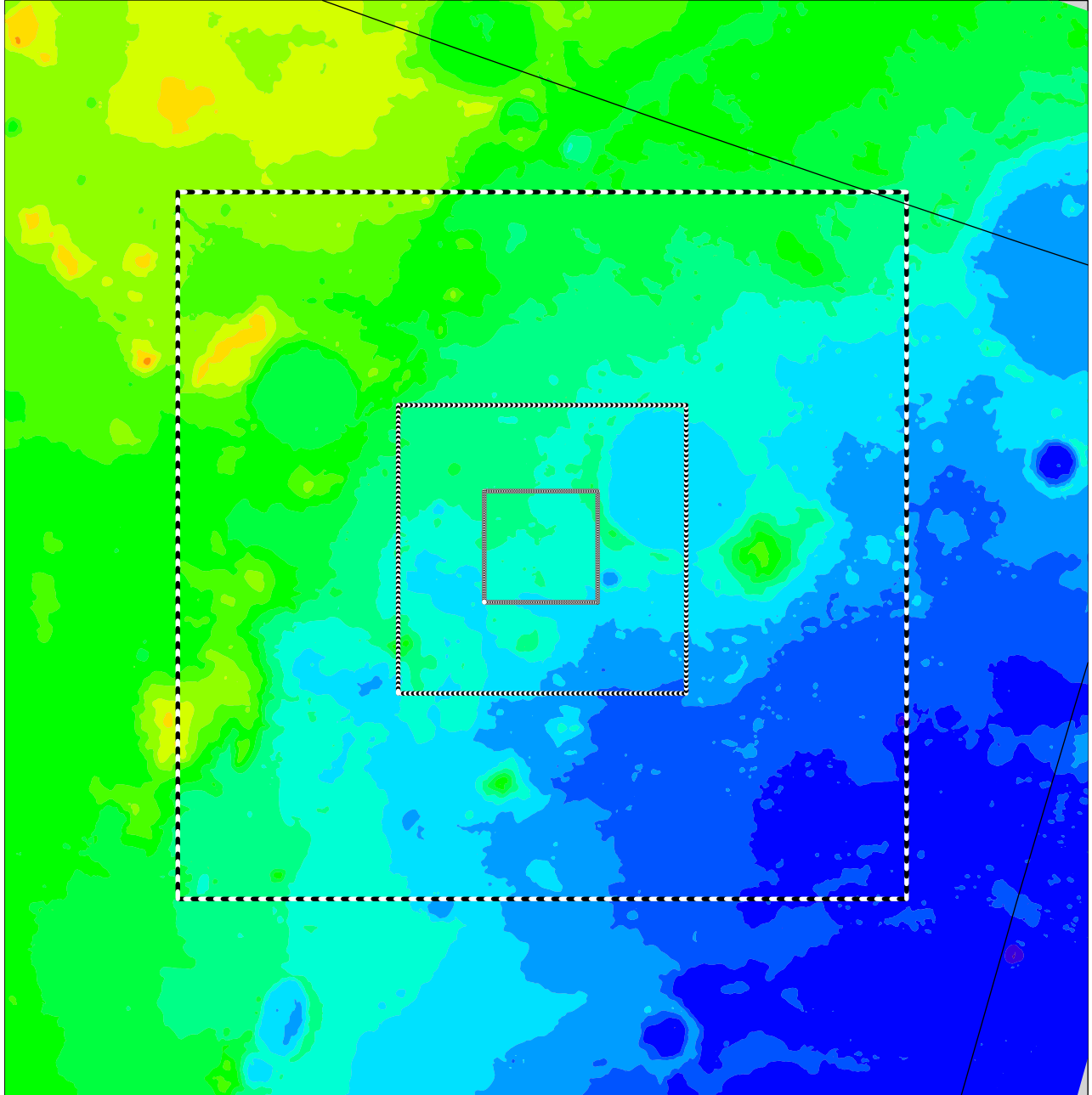


-4800 -4000 -3200 -2400 -1600 -800 0 800 1600

Gale_LS0p4 (grids 5 to 7)

topographic height above areoid

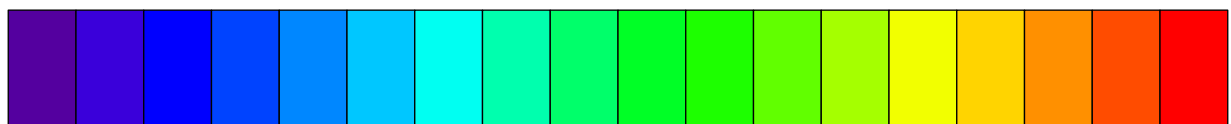
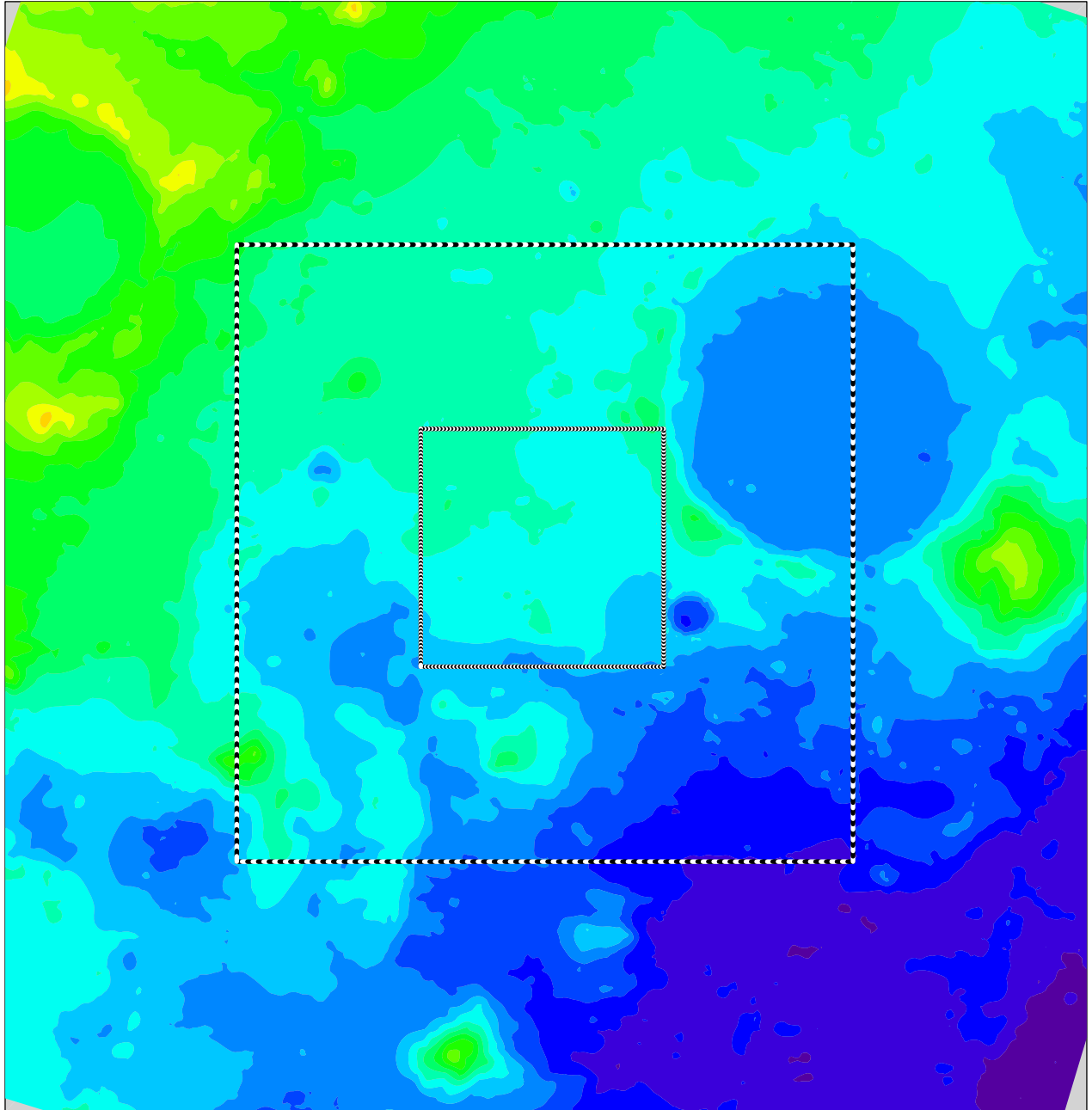
m



-4000 -3200 -2400 -1600 -800 0 800 1600

Gale_LS0p4 (grids 6 to 7)

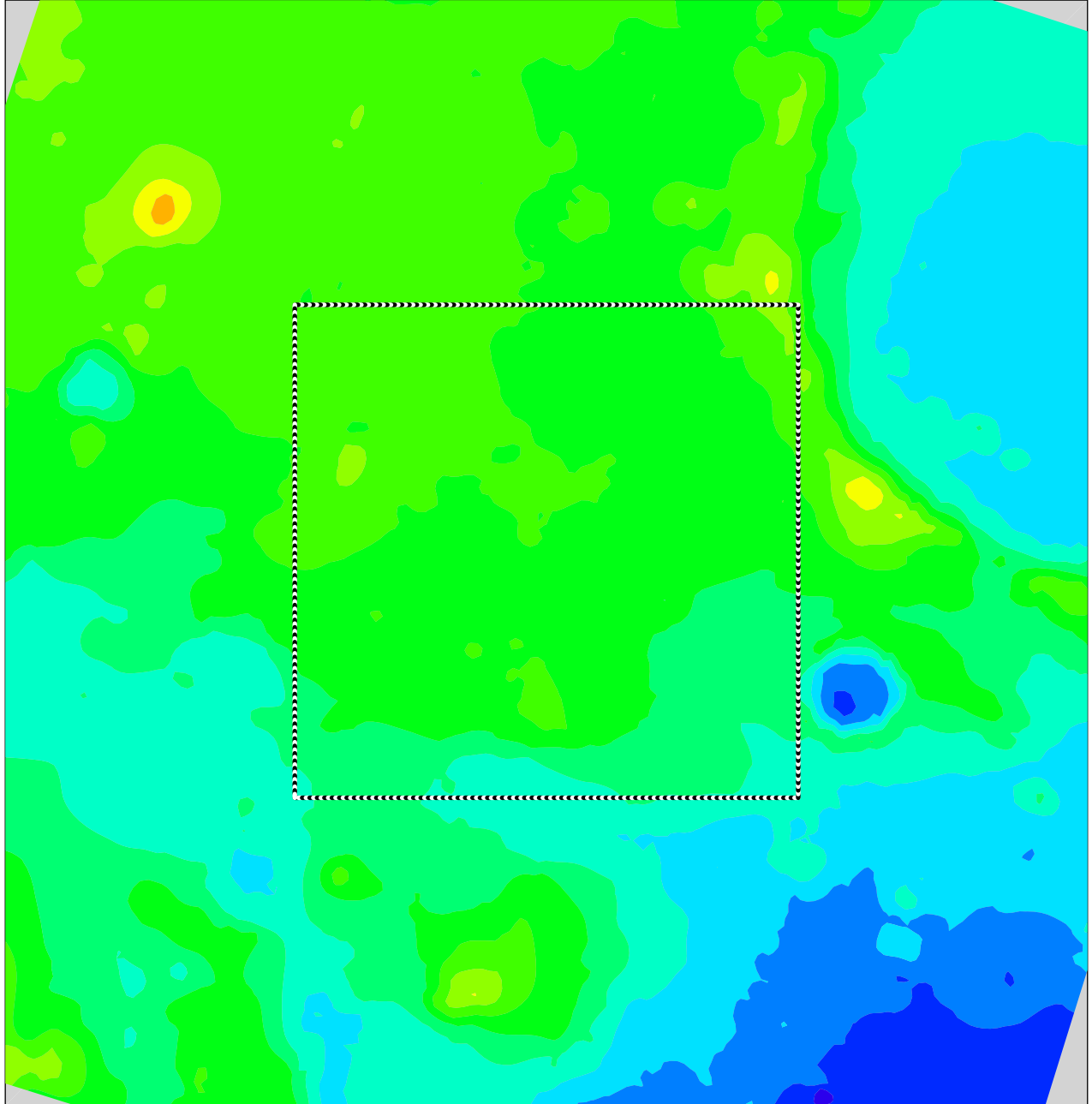
topographic height above areoid m



-3500 -3000 -2500 -2000 -1500 -1000 -500 0 500

Gale_LS0p4 (grids 7 to 7)

topographic height above areoid m



-3400 -3000 -2600 -2200 -1800 -1400 -1000