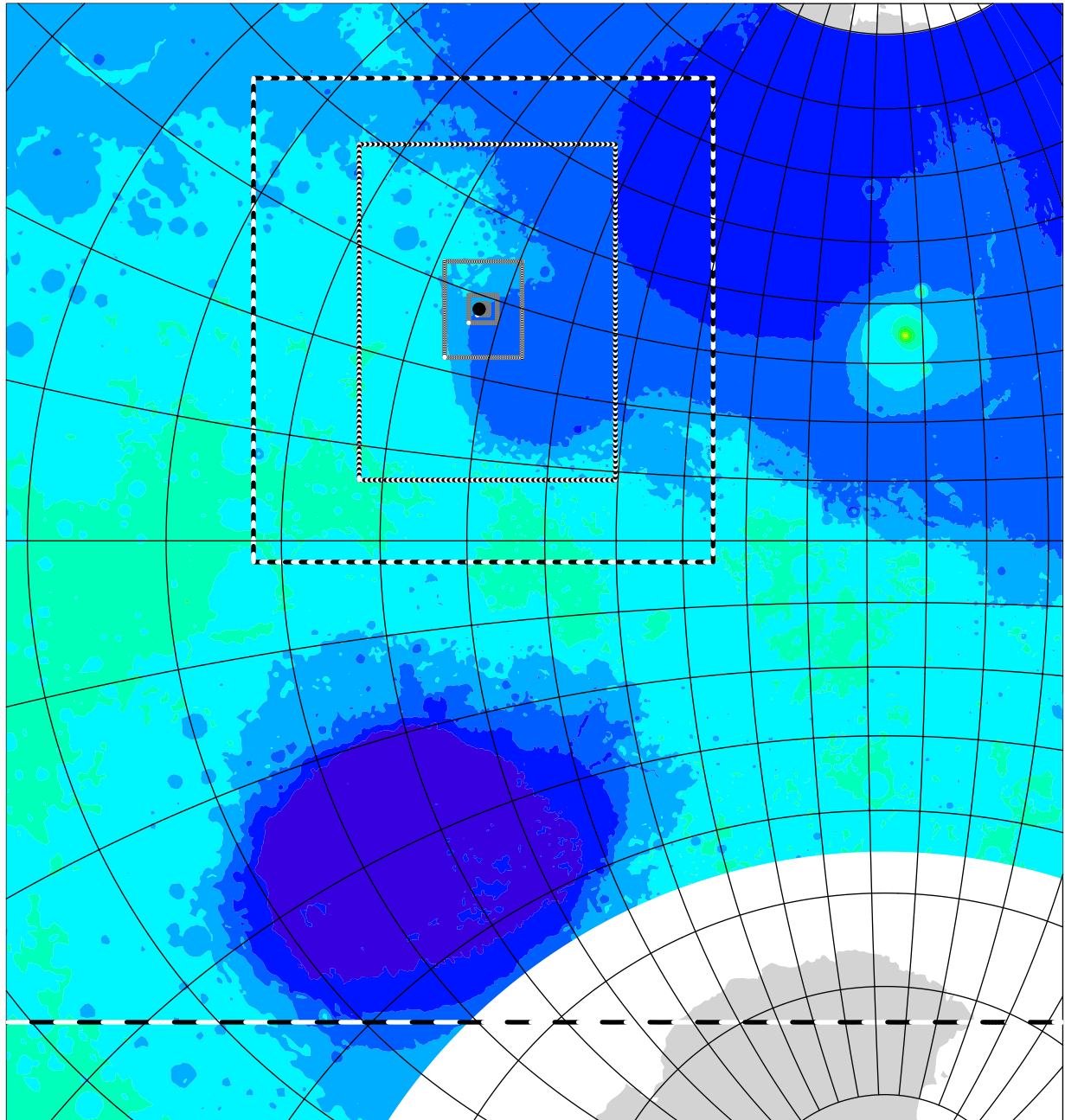


Jezero (grids 1 to 7)

topographic height above areoid

m

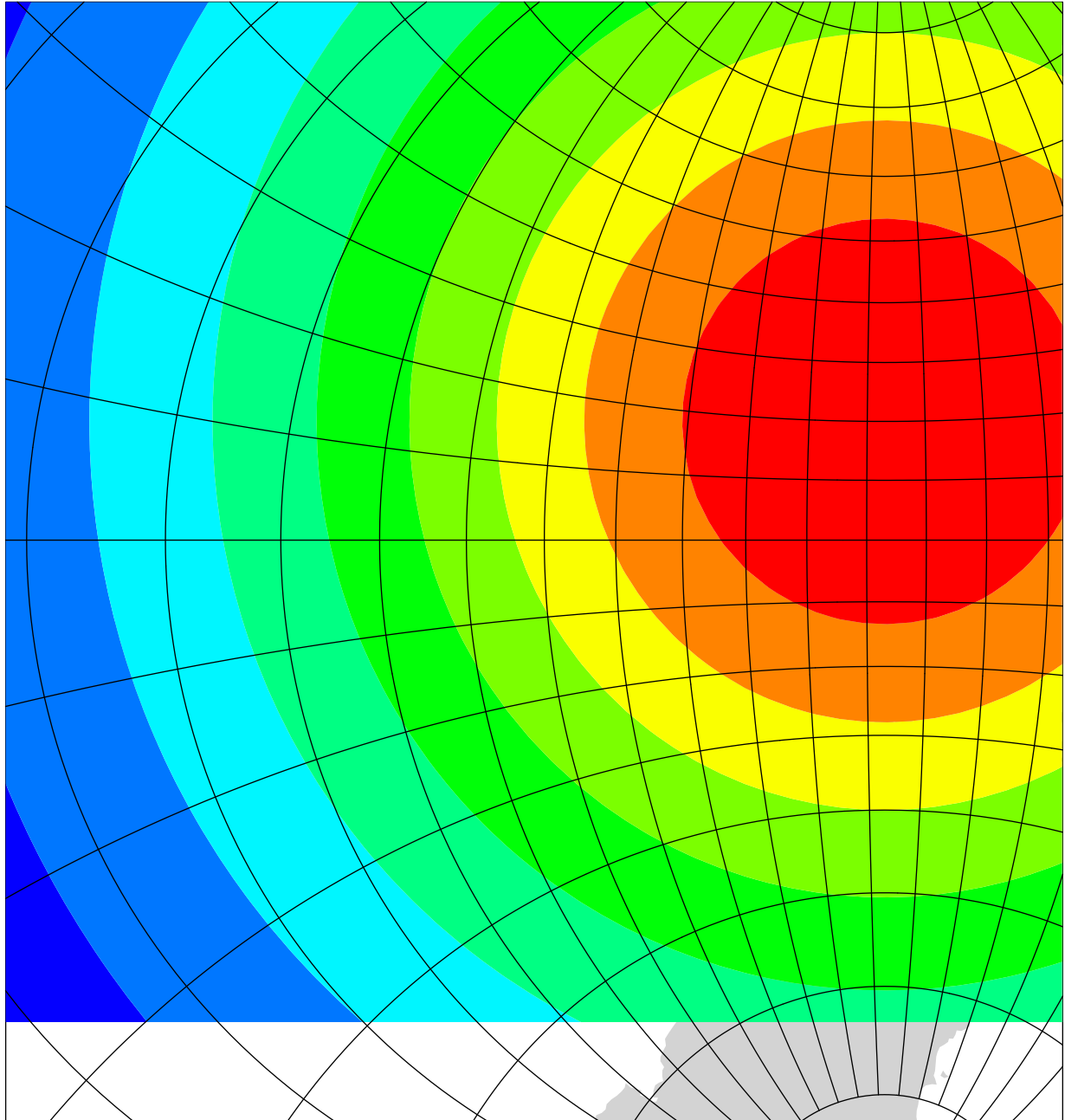


-8000 -4000 0 4000 8000 12000 16000 20000

Gridspacing distance variation on grid #1

actual gridspacing distance

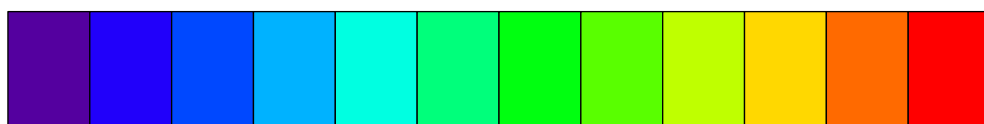
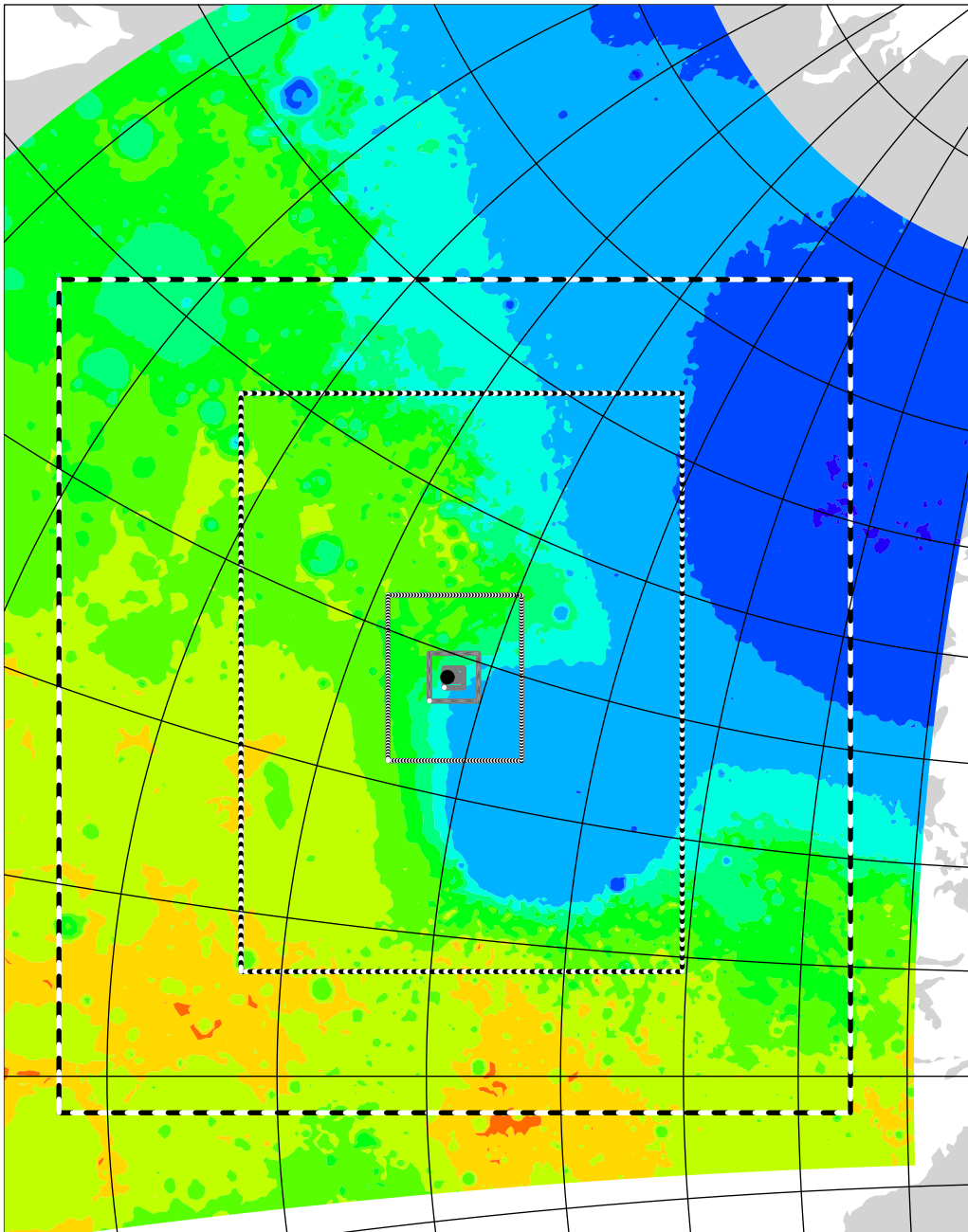
km



60 80 100 120 140 160 180 200 220

Jezero (grids 2 to 7)

topographic height above areoid m



-6000

-4000

-2000

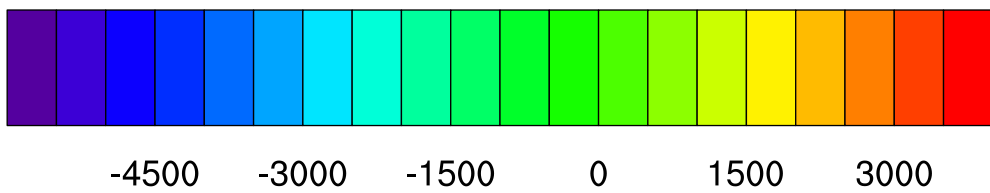
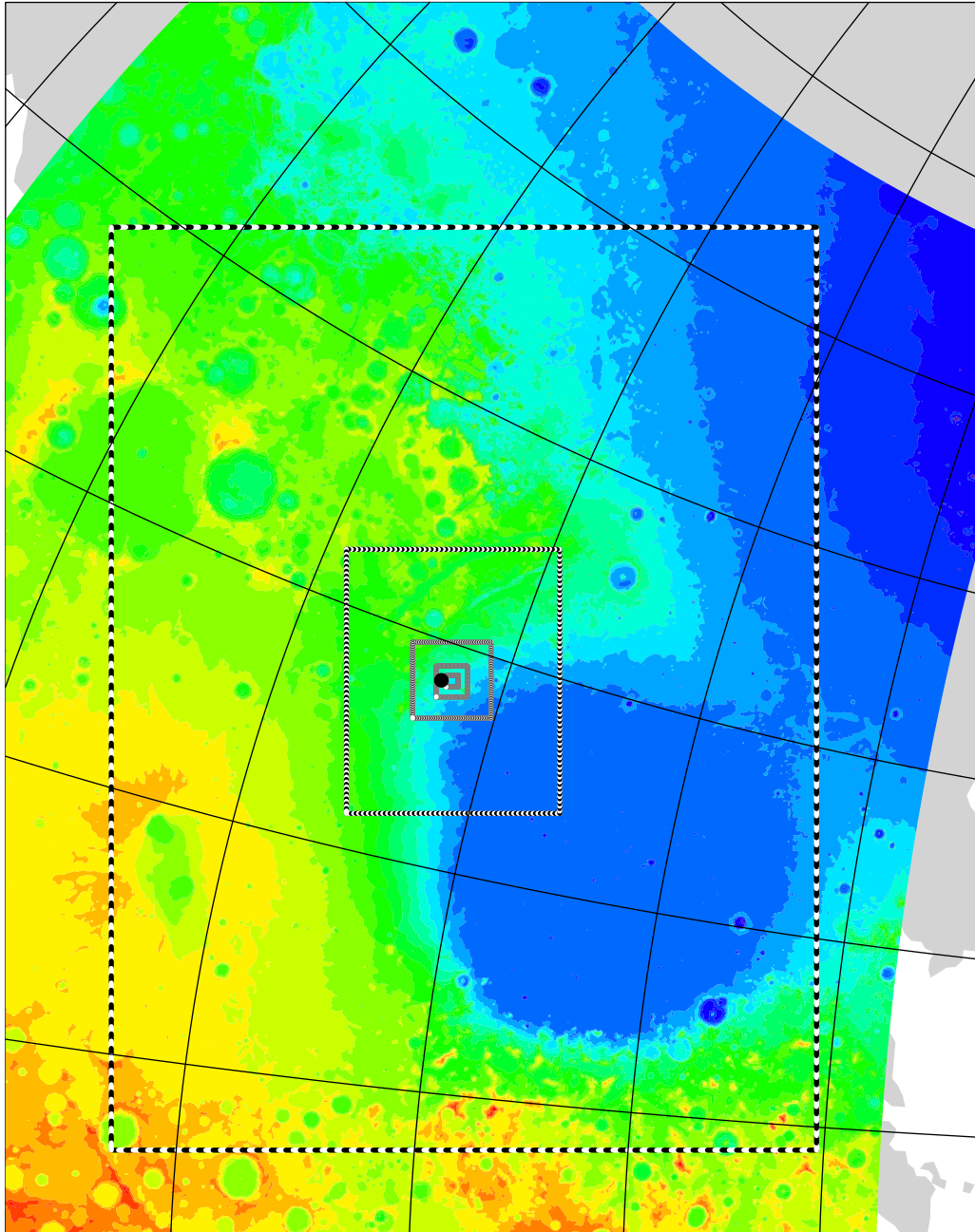
0

2000

4000

Jezero (grids 3 to 7)

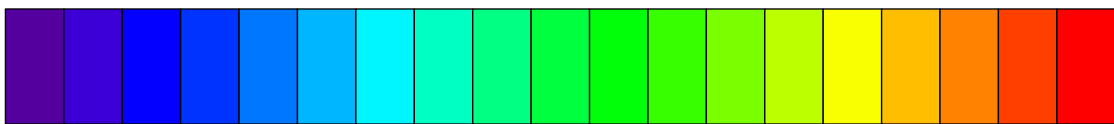
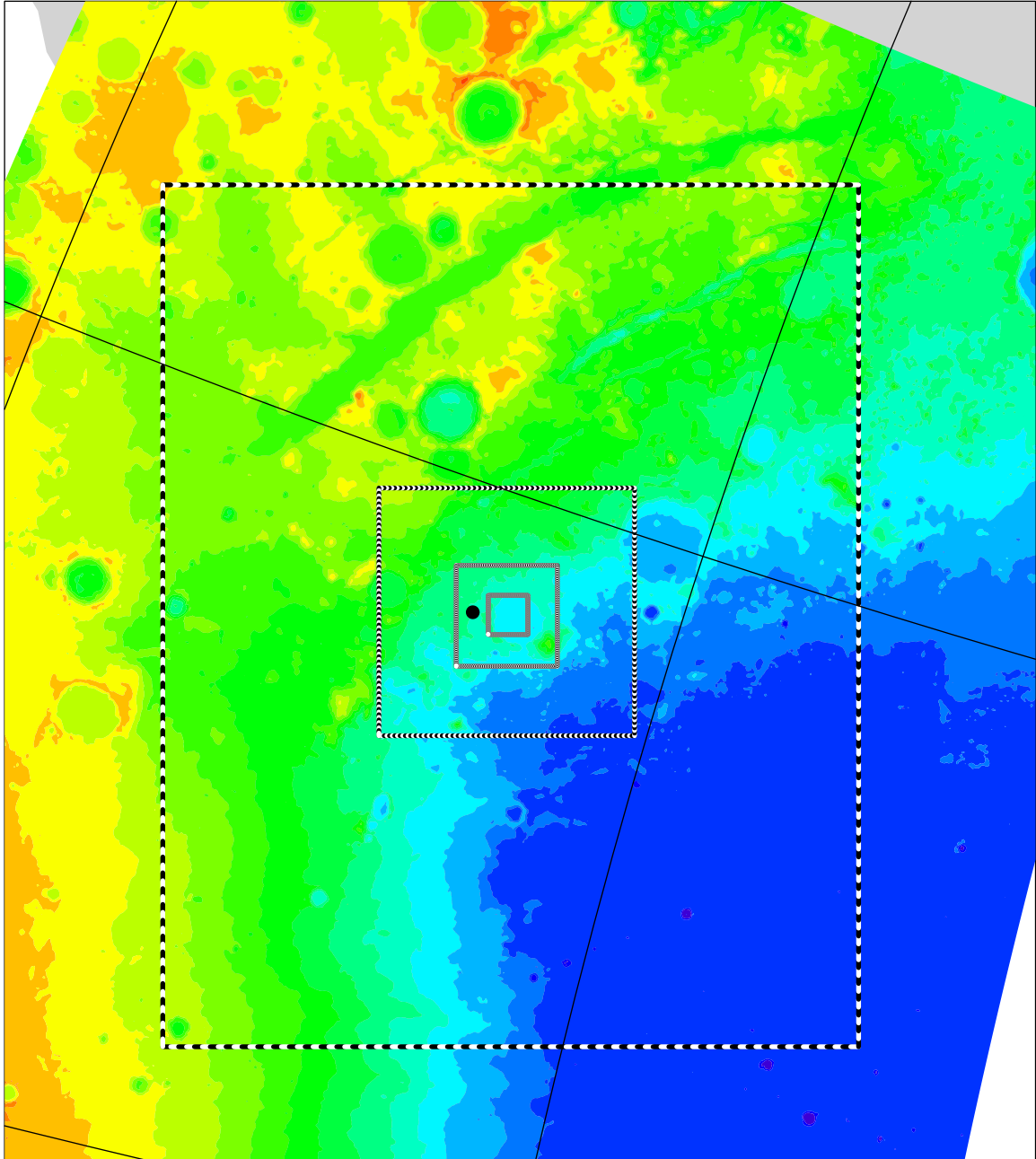
topographic height above areoid m



Jezero (grids 4 to 7)

topographic height above areoid

m

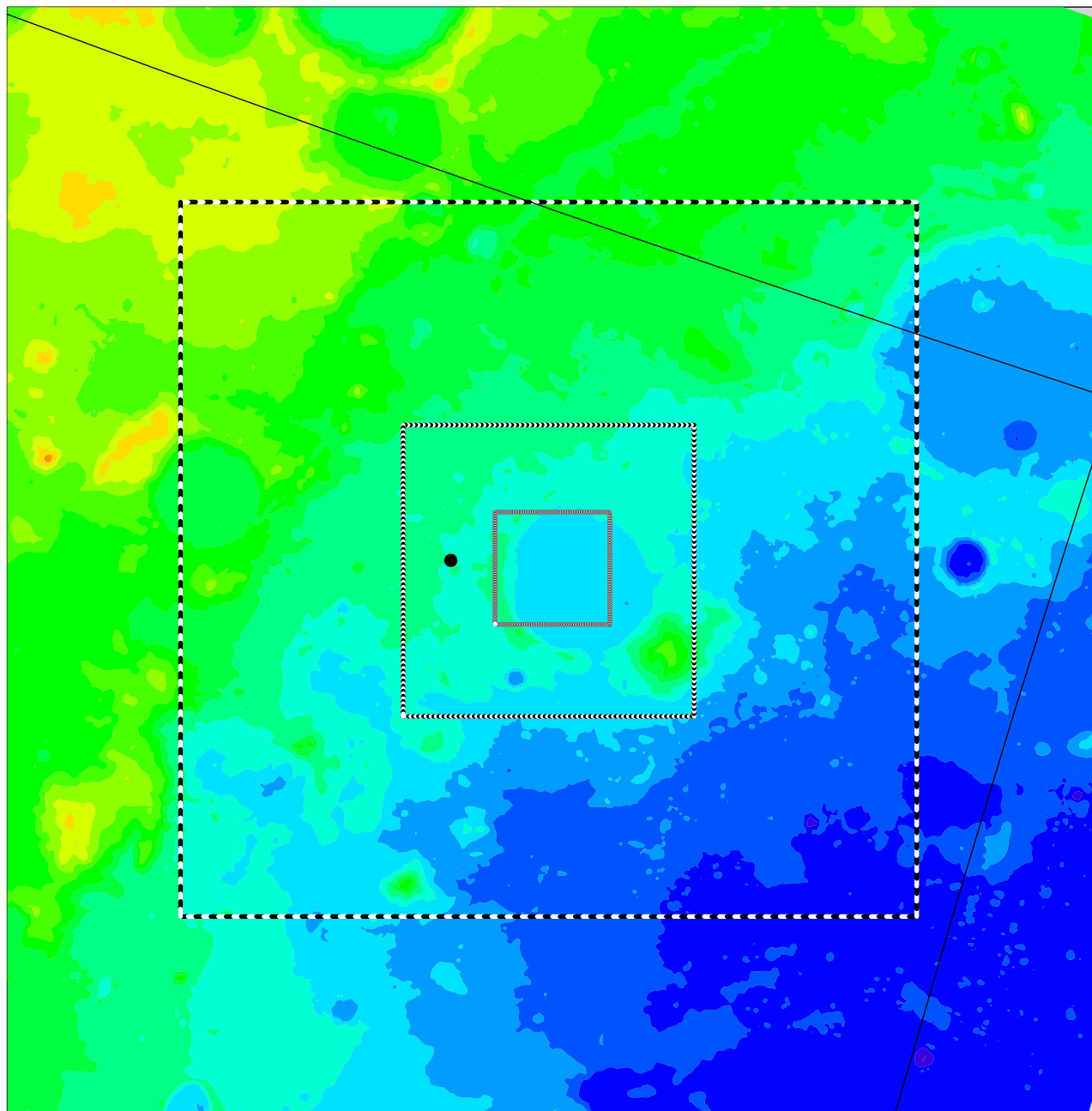


-4800 -4000 -3200 -2400 -1600 -800 0 800 1600

Jezero (grids 5 to 7)

topographic height above areoid

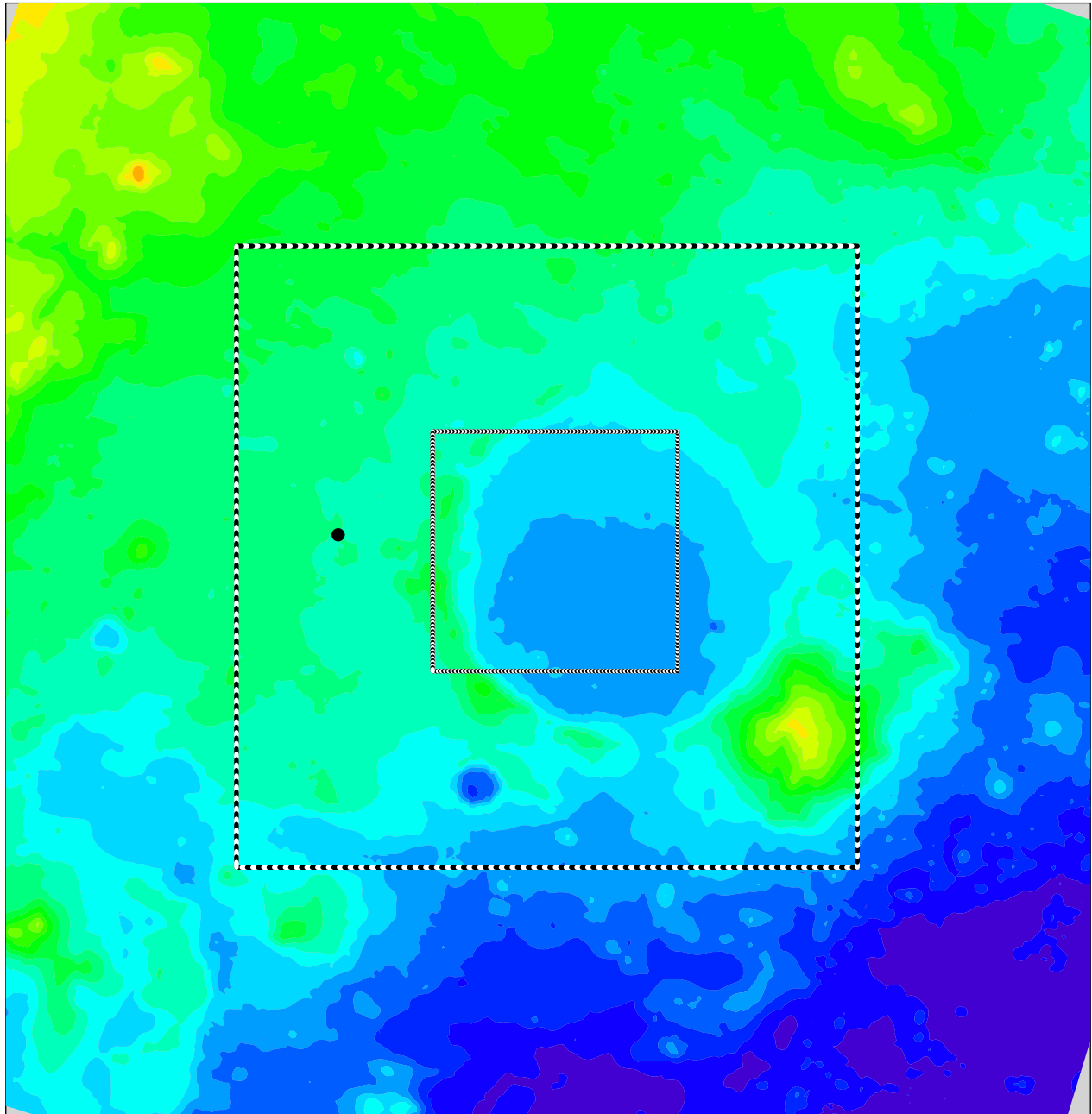
m



-4000 -3200 -2400 -1600 -800 0 800 1600

Jezero (grids 6 to 7)

topographic height above areoid m

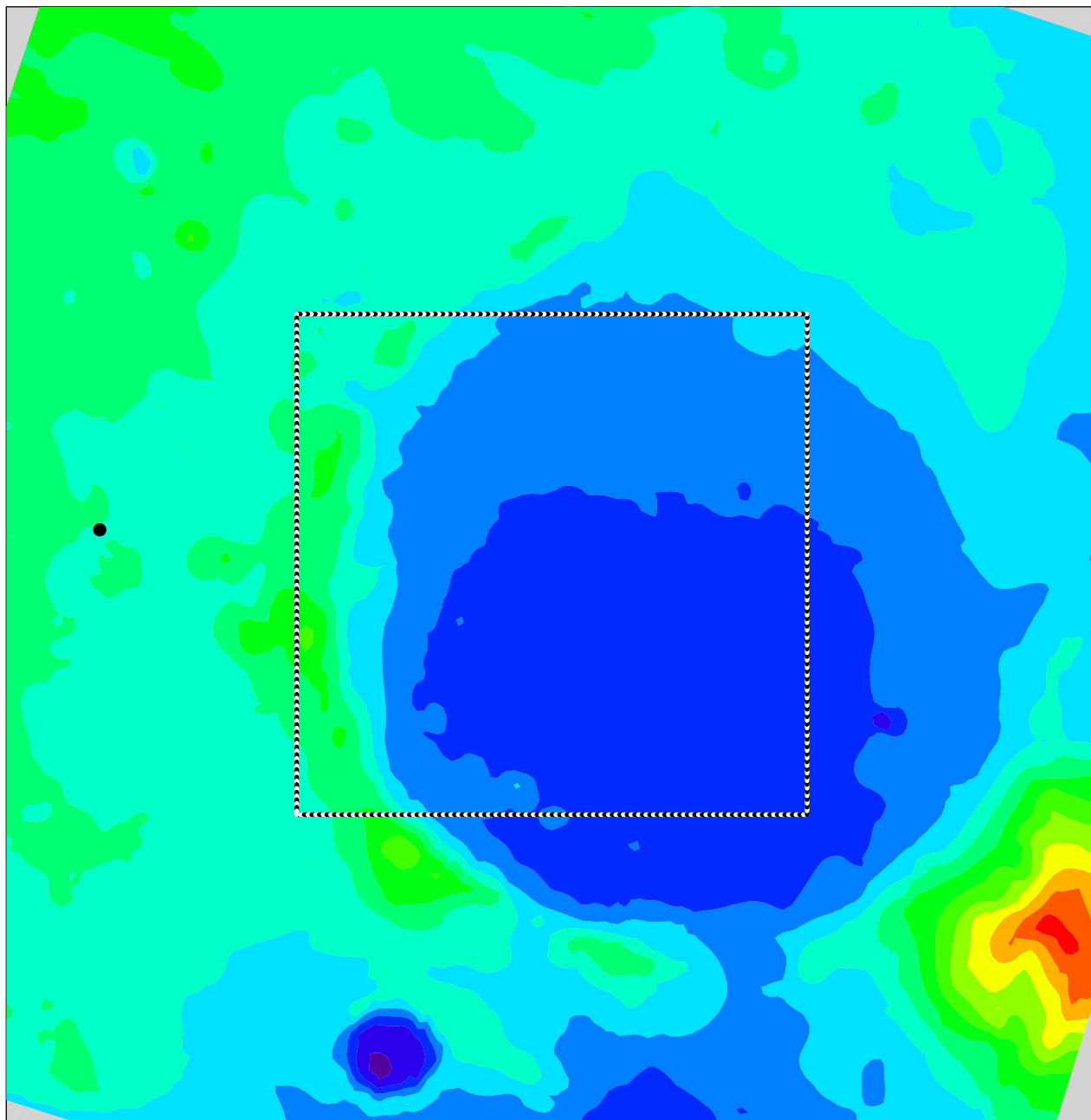


-3600 -3000 -2400 -1800 -1200 -600 0

Jezero (grids 7 to 7)

topographic height above areoid

m



-2800

-2400

-2000

-1600

-1200

-800