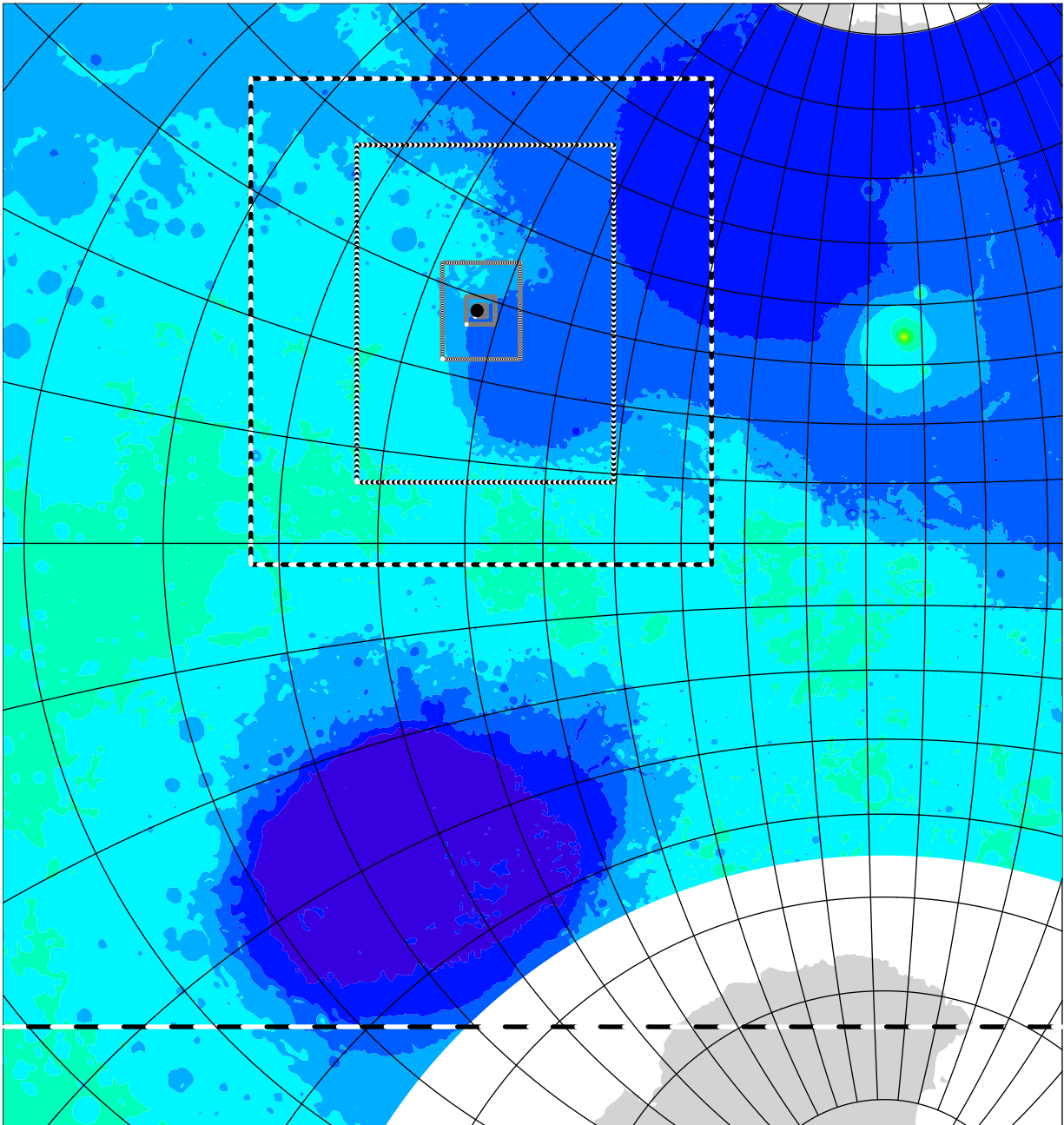


# Midway\_Jezero (grids 1 to 7)

topographic height above areoid m

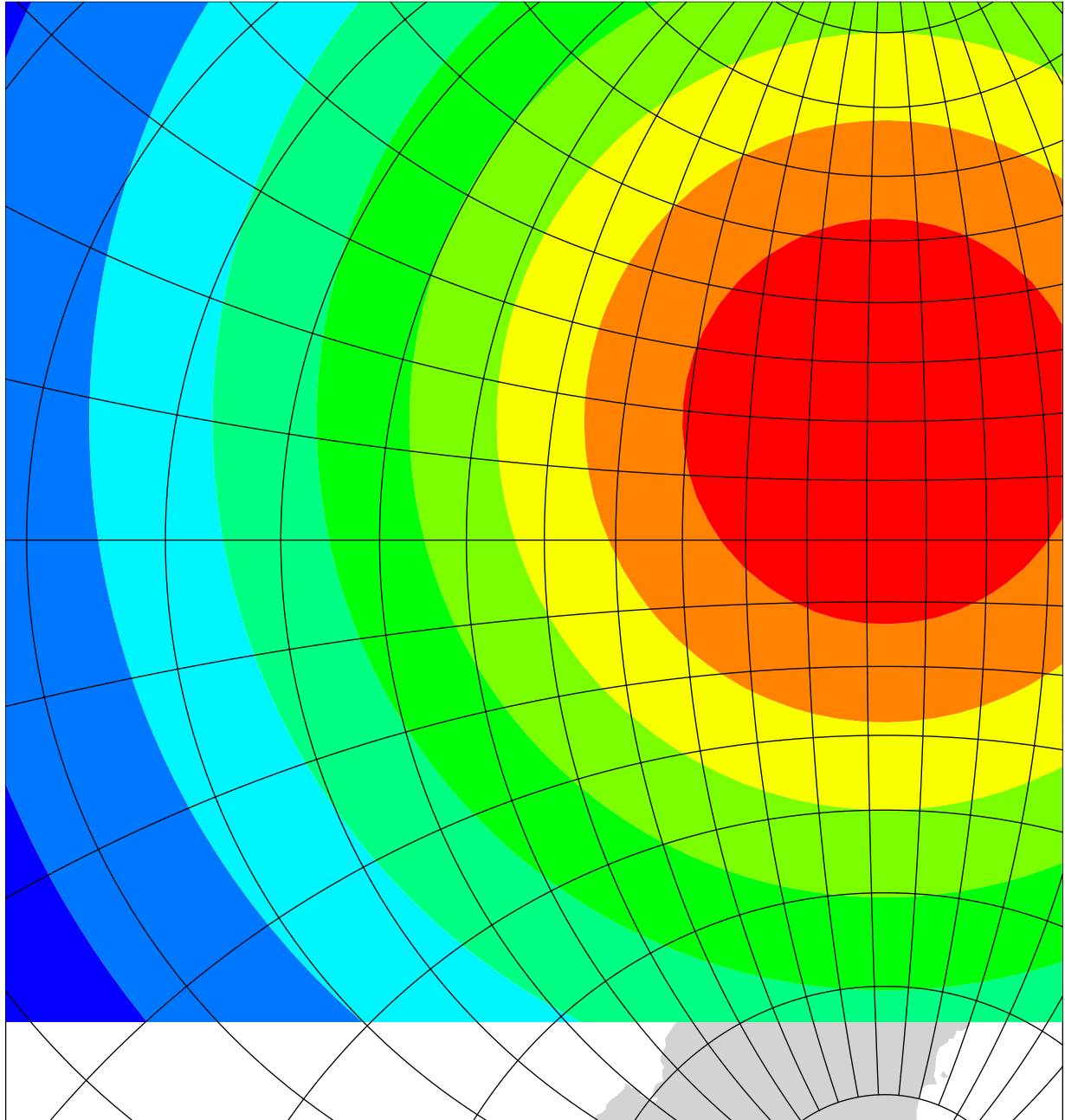


-8000   -4000   0   4000   8000   12000   16000   20000

# Gridspacing distance variation on grid #1

actual gridspacing distance

km

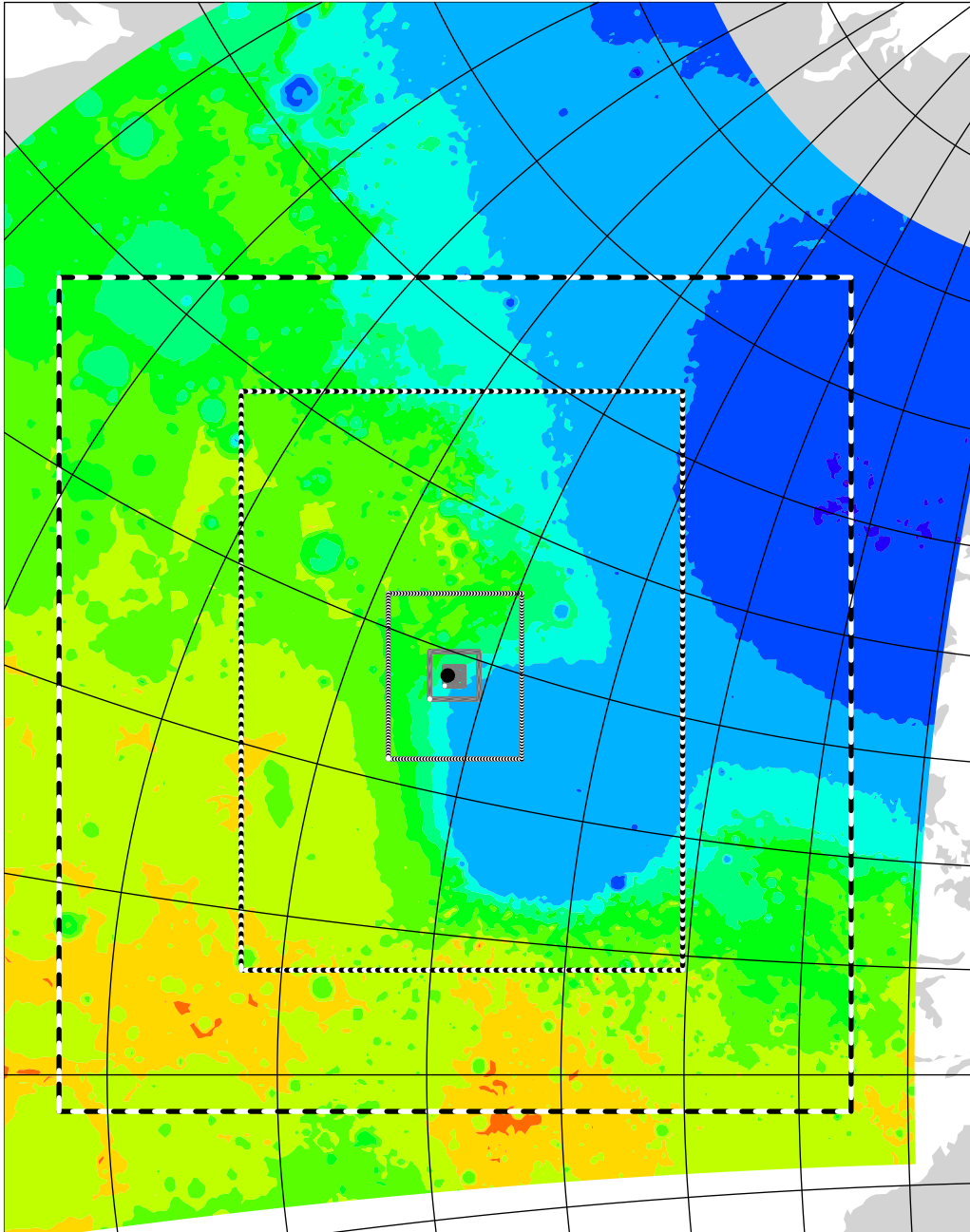


60 80 100 120 140 160 180 200 220

# Midway\_Jezero (grids 2 to 7)

topographic height above areoid

m



-6000

-4000

-2000

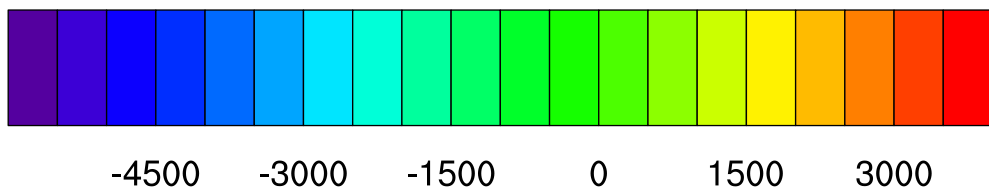
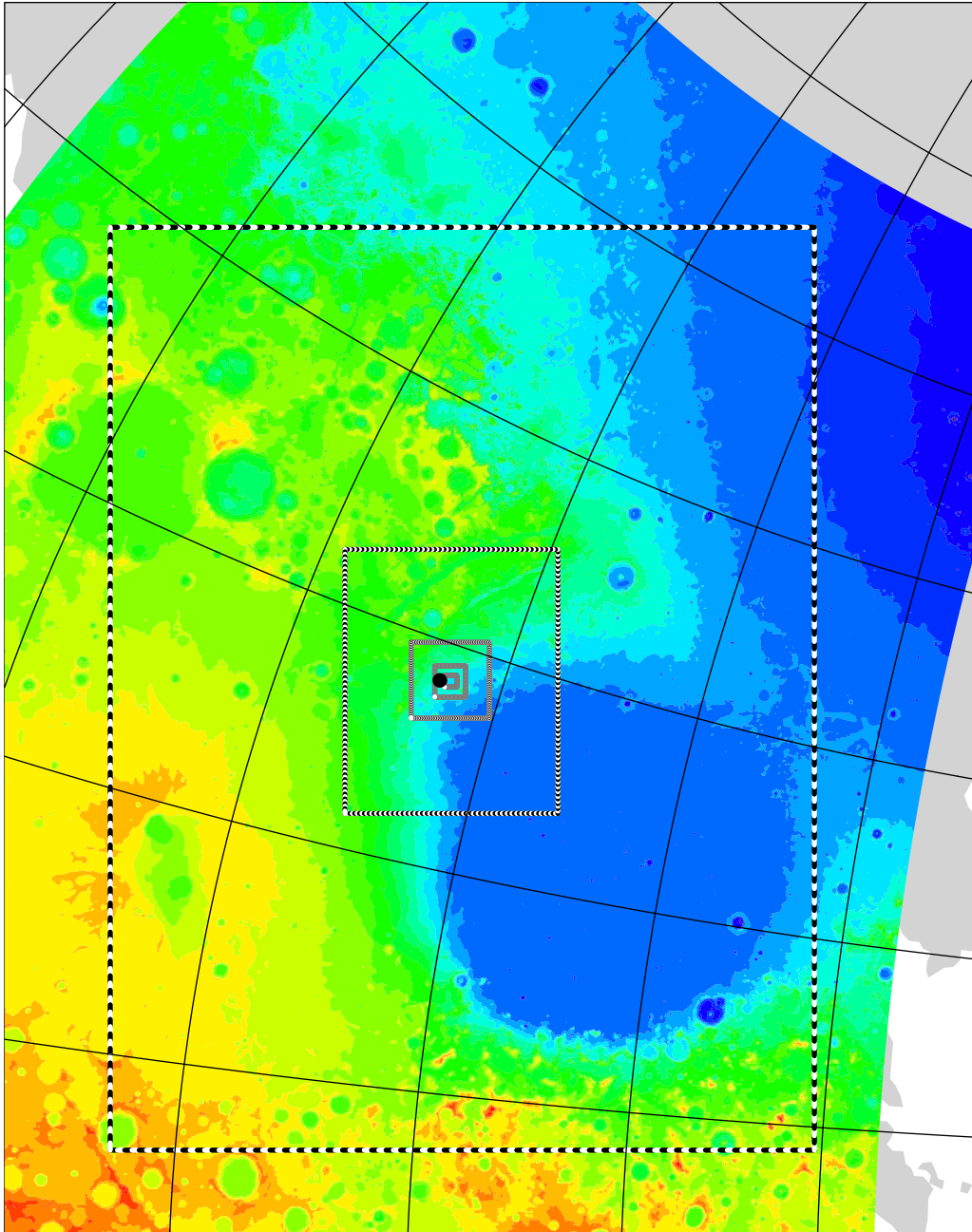
0

2000

4000

# Midway\_Jezero (grids 3 to 7)

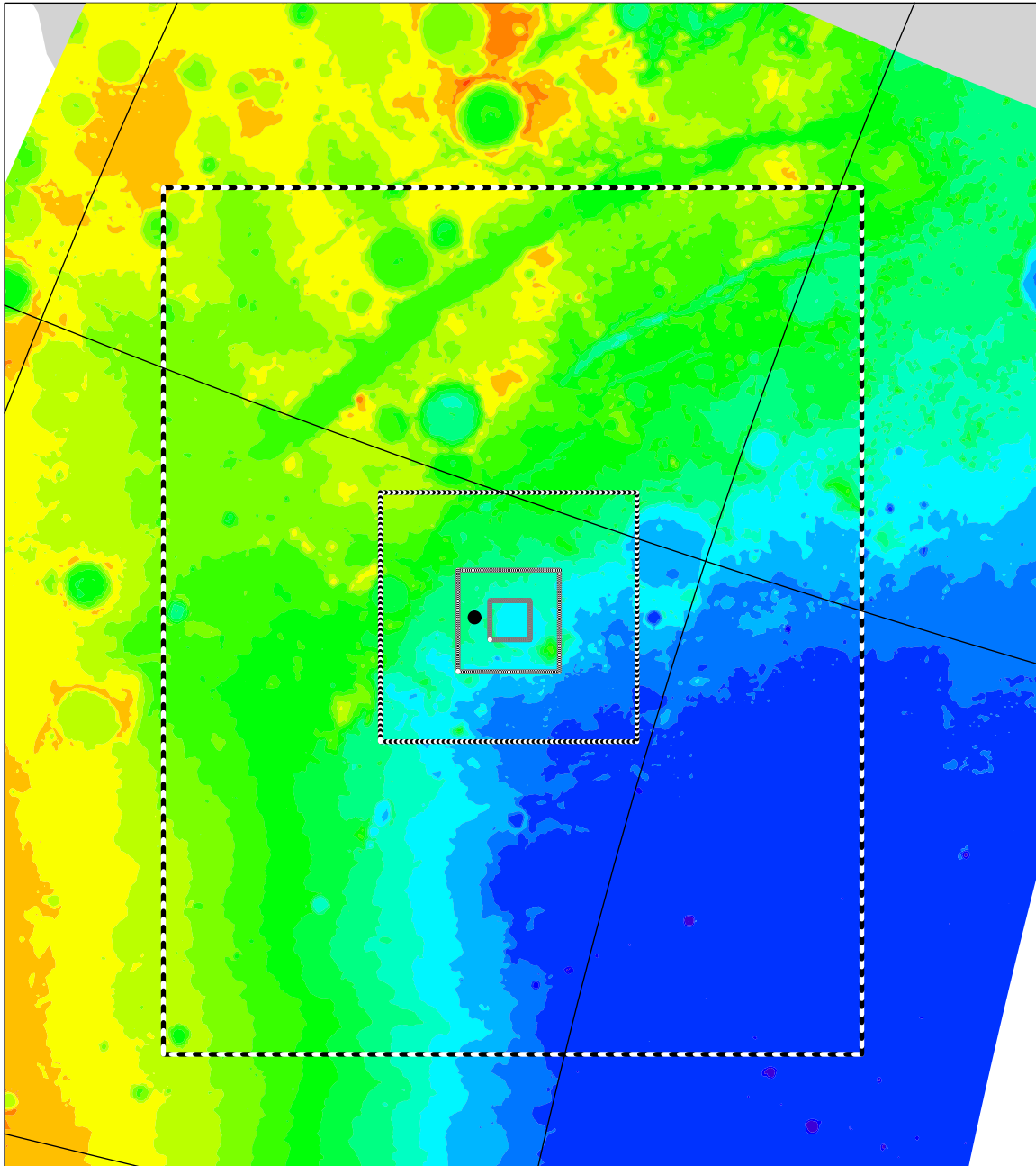
topographic height above areoid m



# Midway\_Jezero (grids 4 to 7)

topographic height above areoid

m

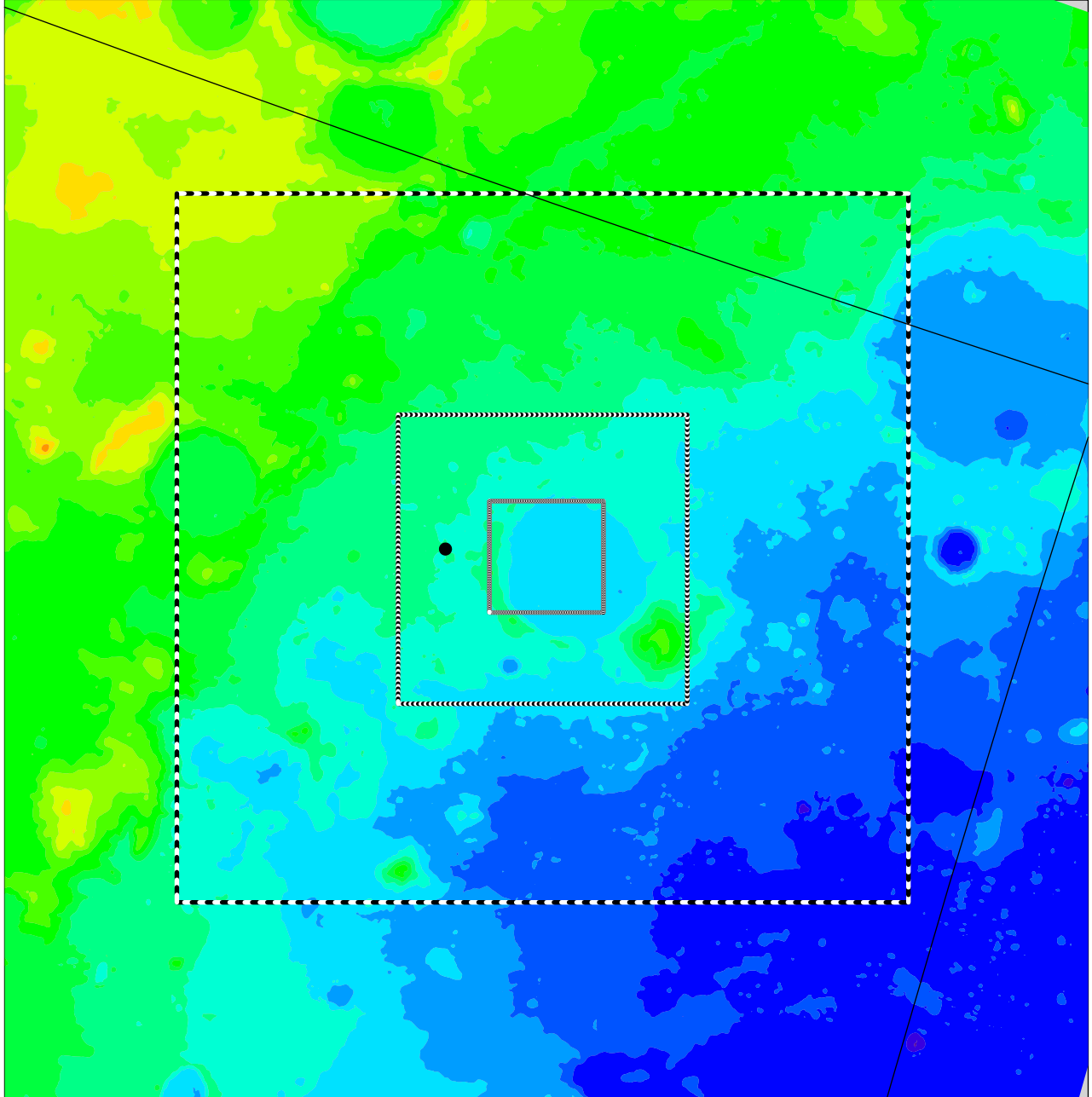


-4800 -4000 -3200 -2400 -1600 -800 0 800 1600

# Midway\_Jezero (grids 5 to 7)

topographic height above areoid

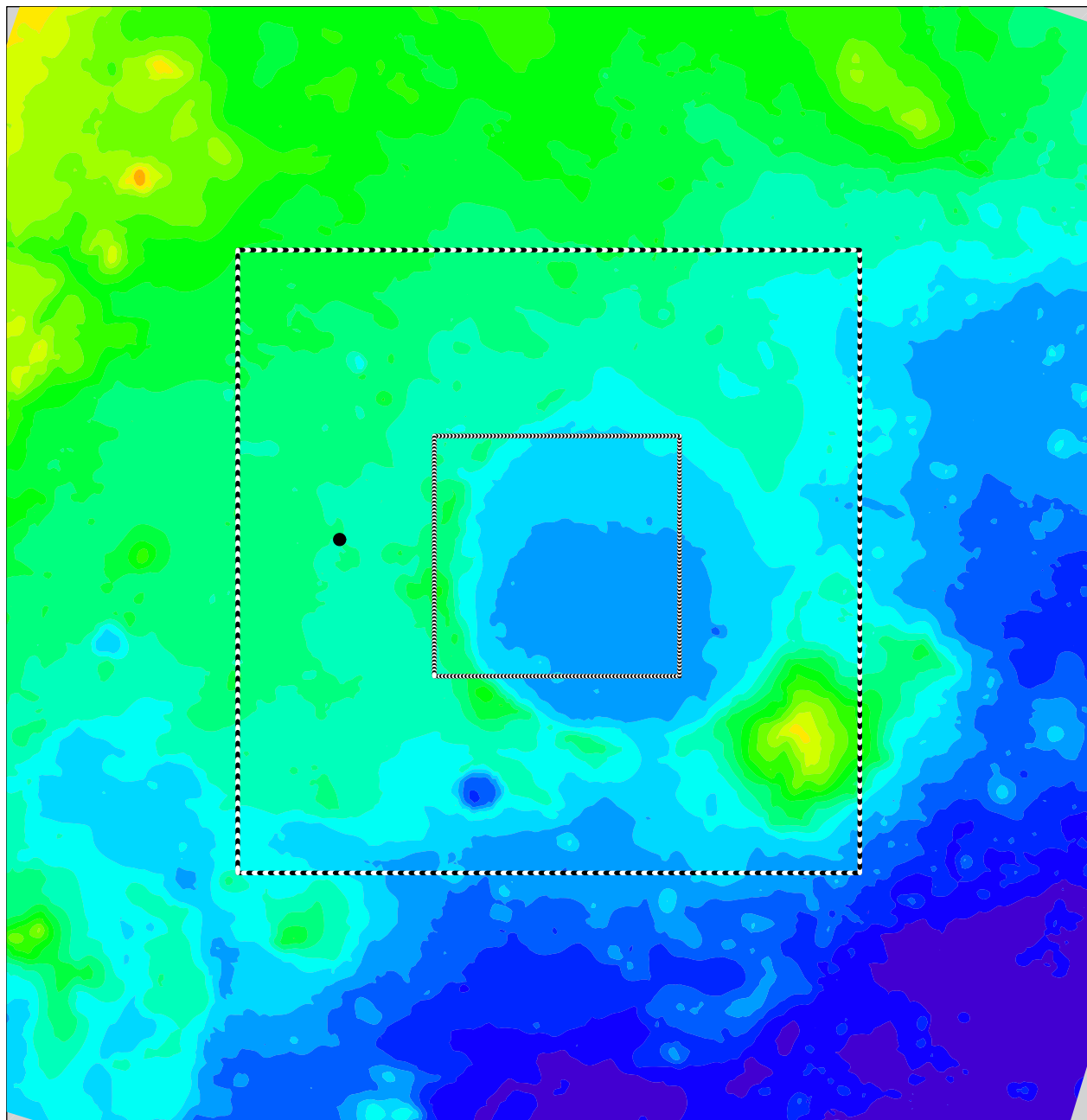
m



-4000 -3200 -2400 -1600 -800 0 800 1600

# Midway\_Jezero (grids 6 to 7)

topographic height above areoid m

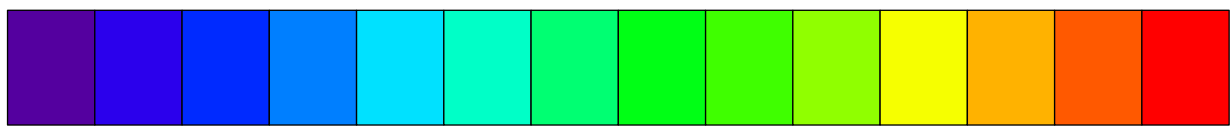
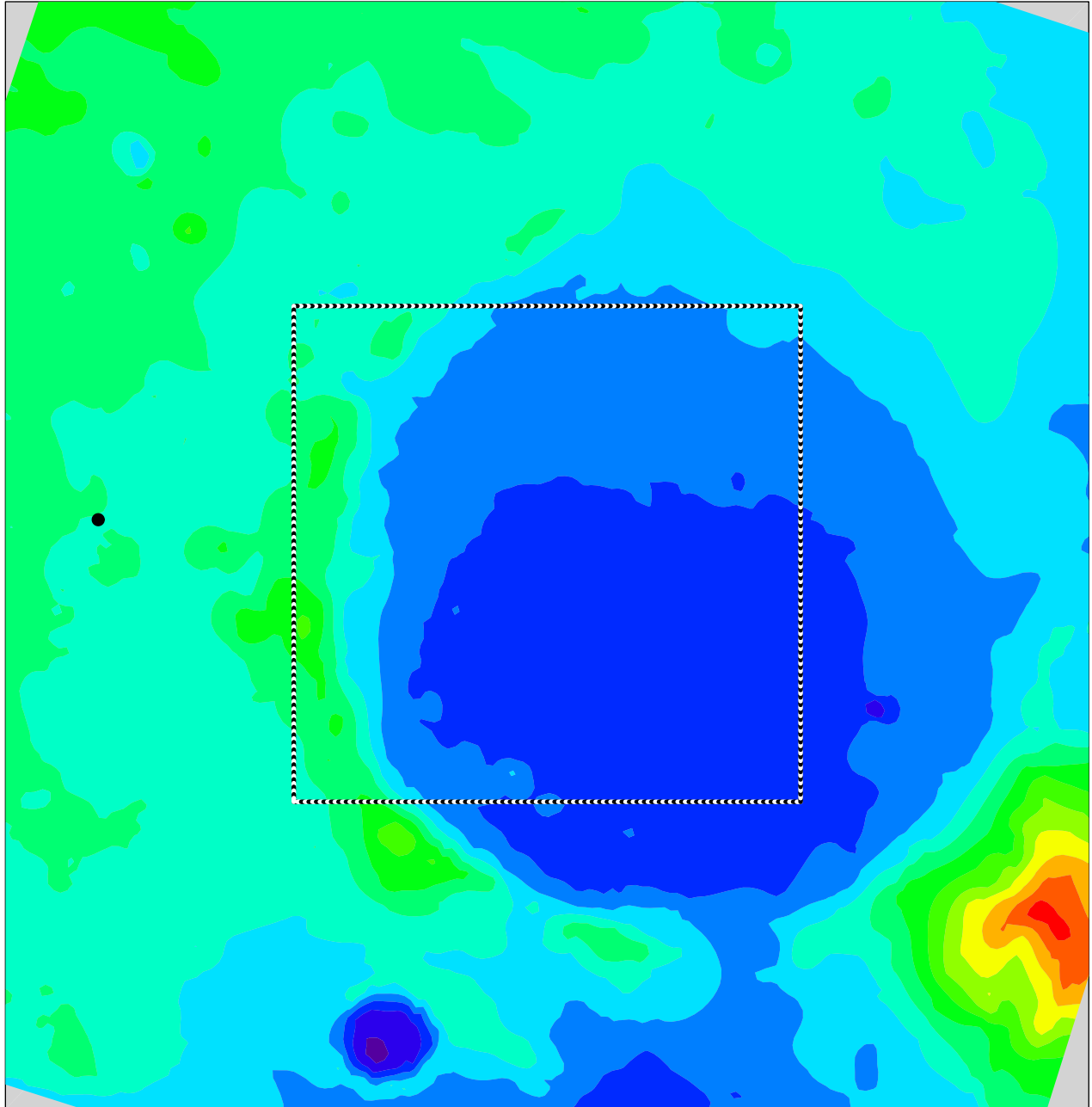


-3600 -3000 -2400 -1800 -1200 -600 0

# Midway\_Jezero (grids 7 to 7)

topographic height above areoid

m



-2800

-2400

-2000

-1600

-1200

-800