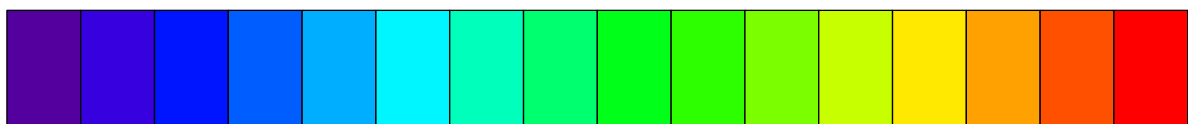
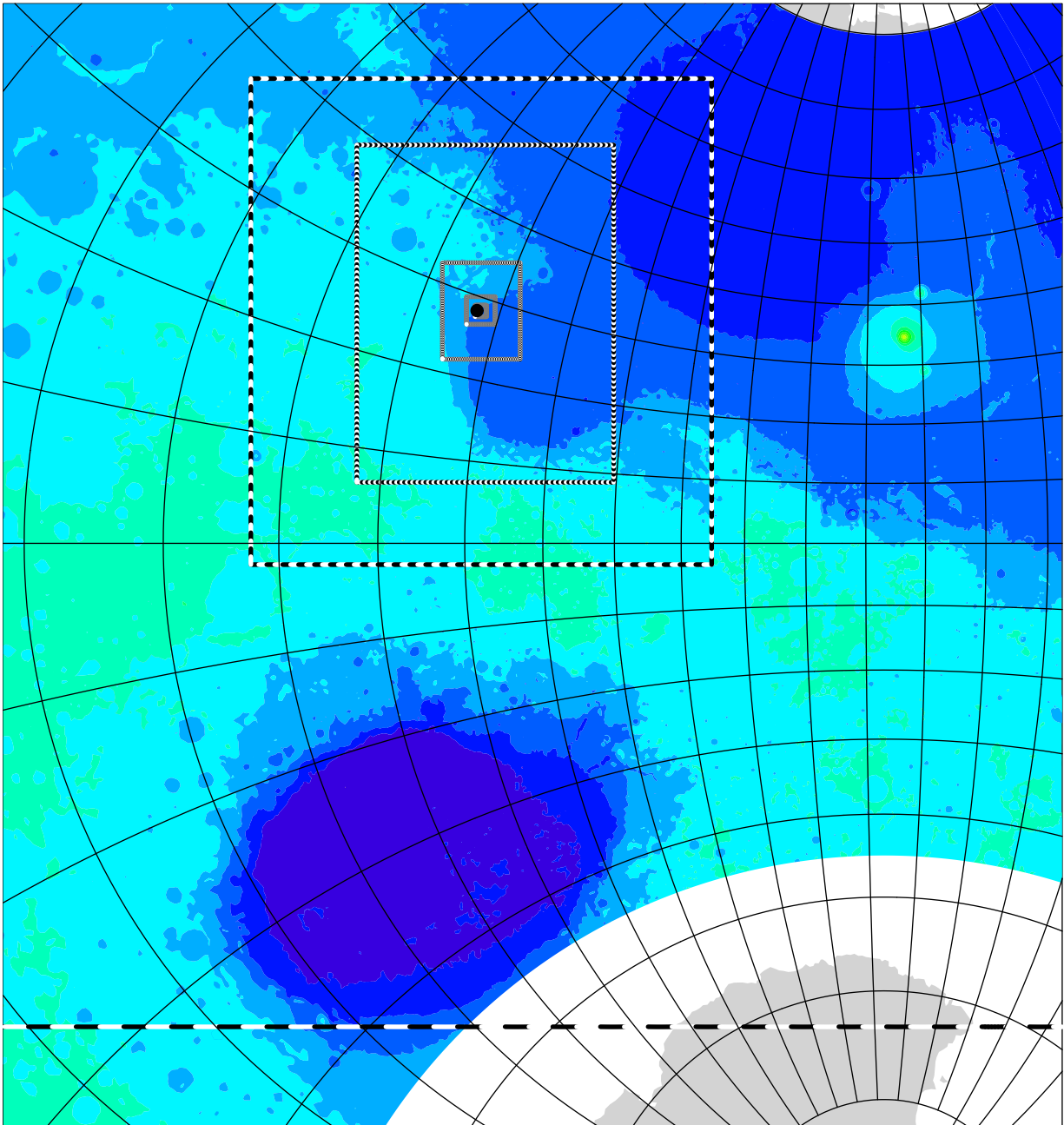


# Midway (grids 1 to 6)

topographic height above areoid m

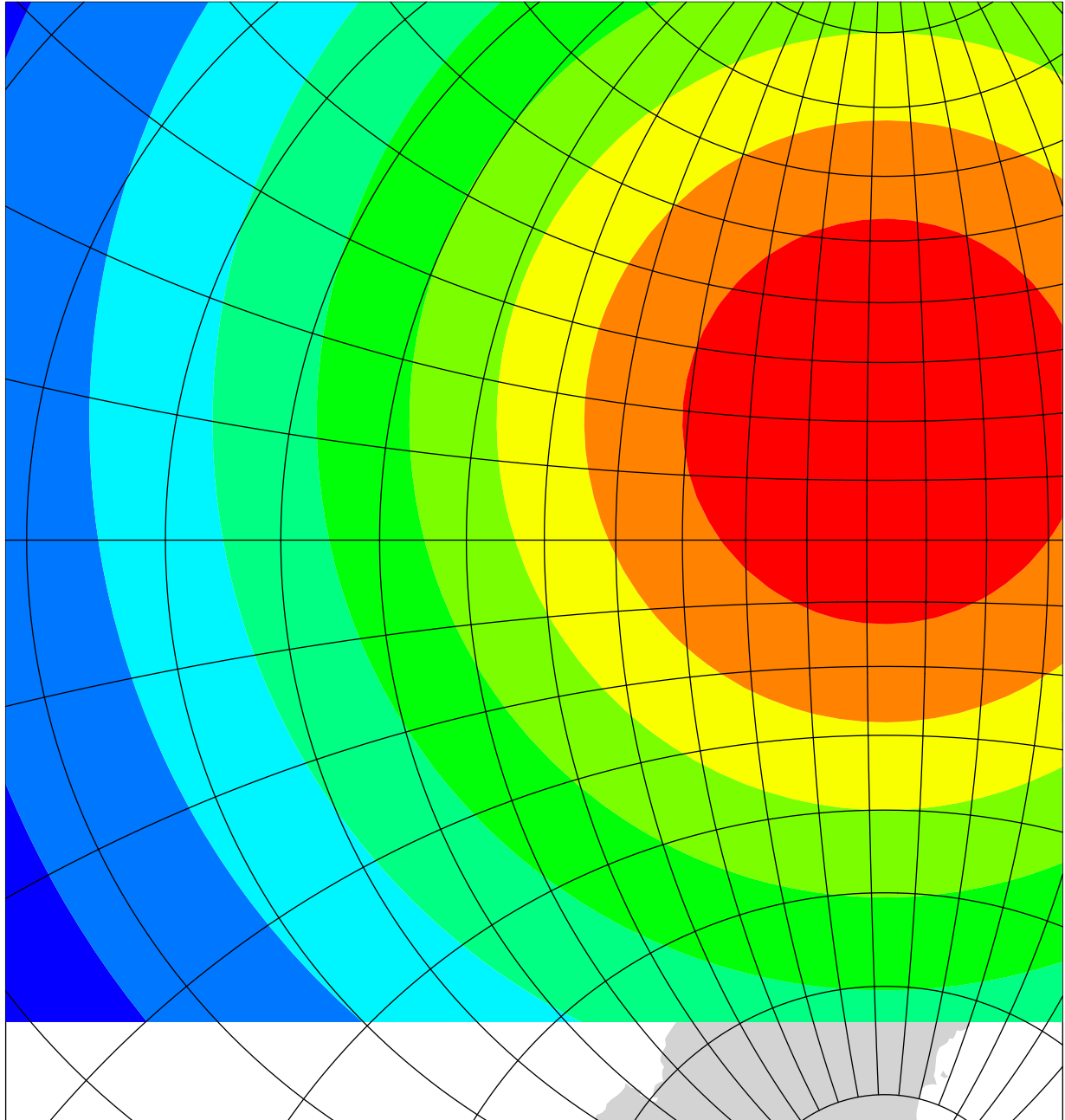


-8000   -4000   0   4000   8000   12000   16000   20000

# Gridspacing distance variation on grid #1

actual gridspacing distance

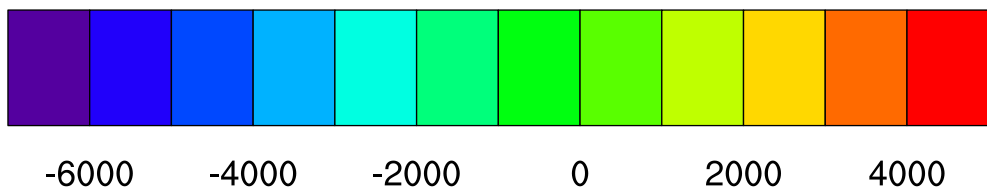
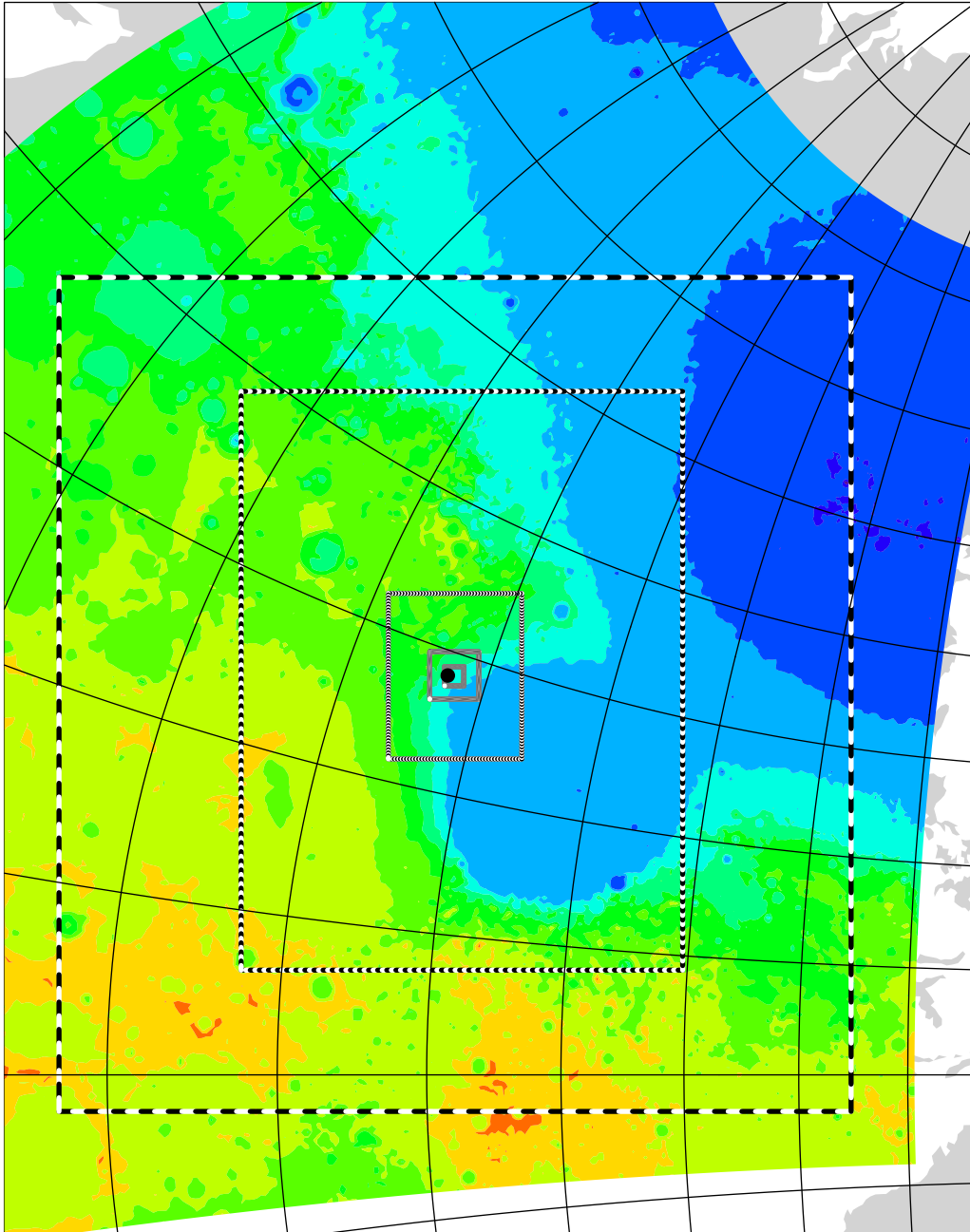
km



60 80 100 120 140 160 180 200 220

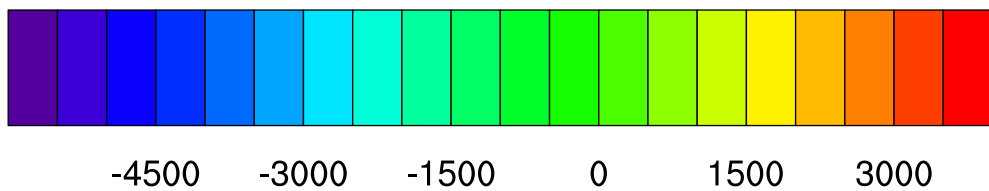
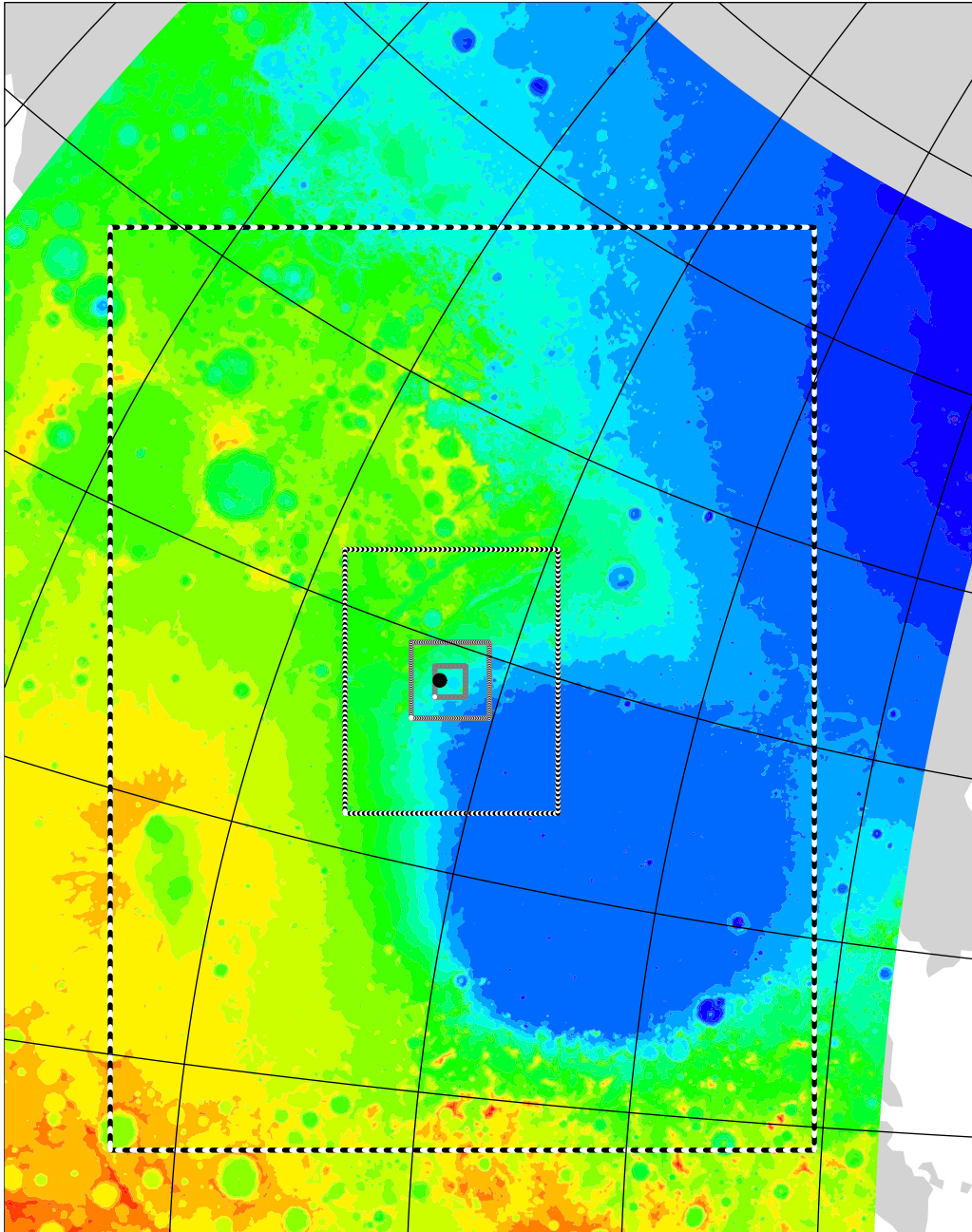
# Midway (grids 2 to 6)

topographic height above areoid m



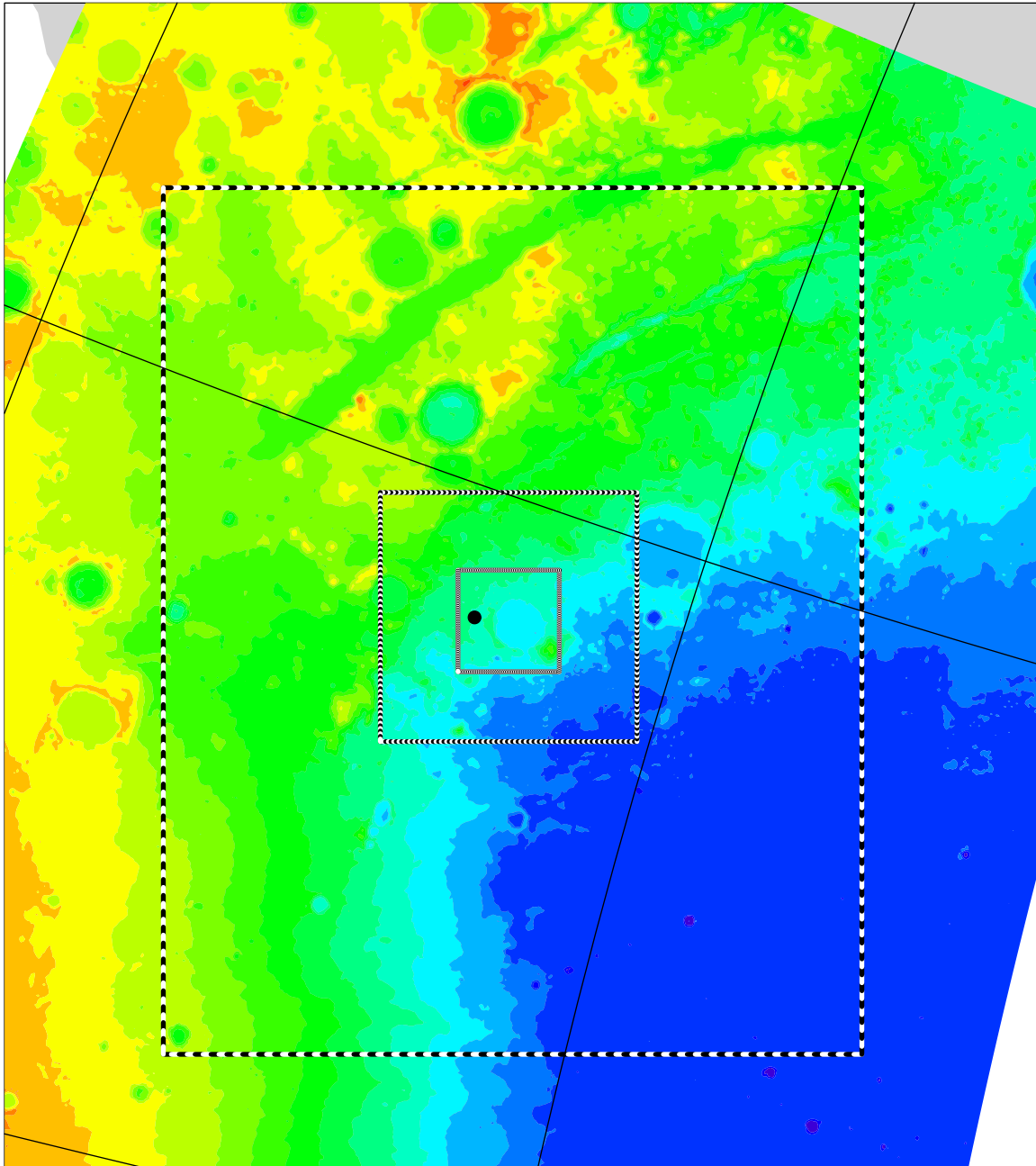
# Midway (grids 3 to 6)

topographic height above areoid m



# Midway (grids 4 to 6)

topographic height above areoid m

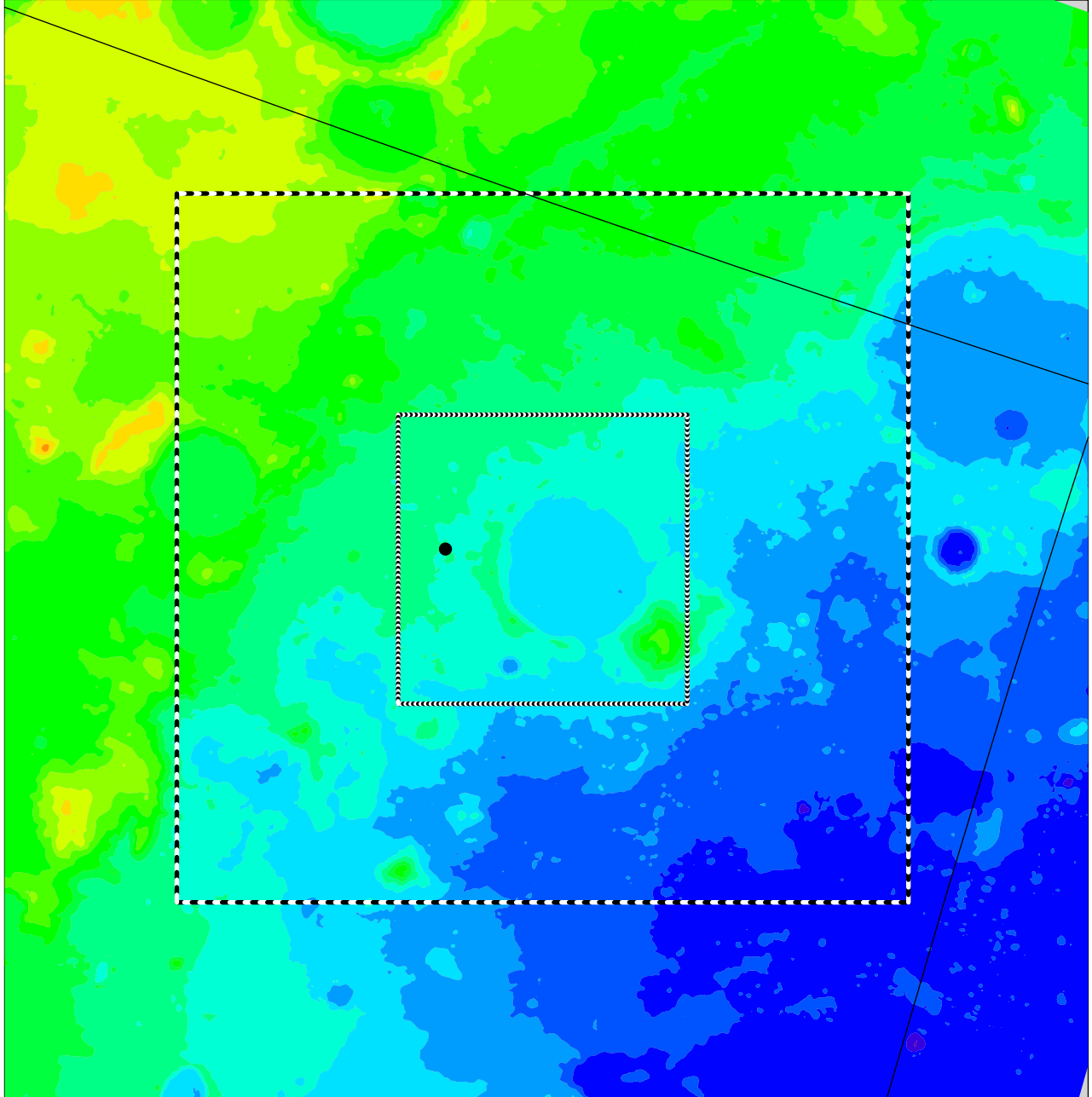


-4800 -4000 -3200 -2400 -1600 -800 0 800 1600

# Midway (grids 5 to 6)

topographic height above areoid

m

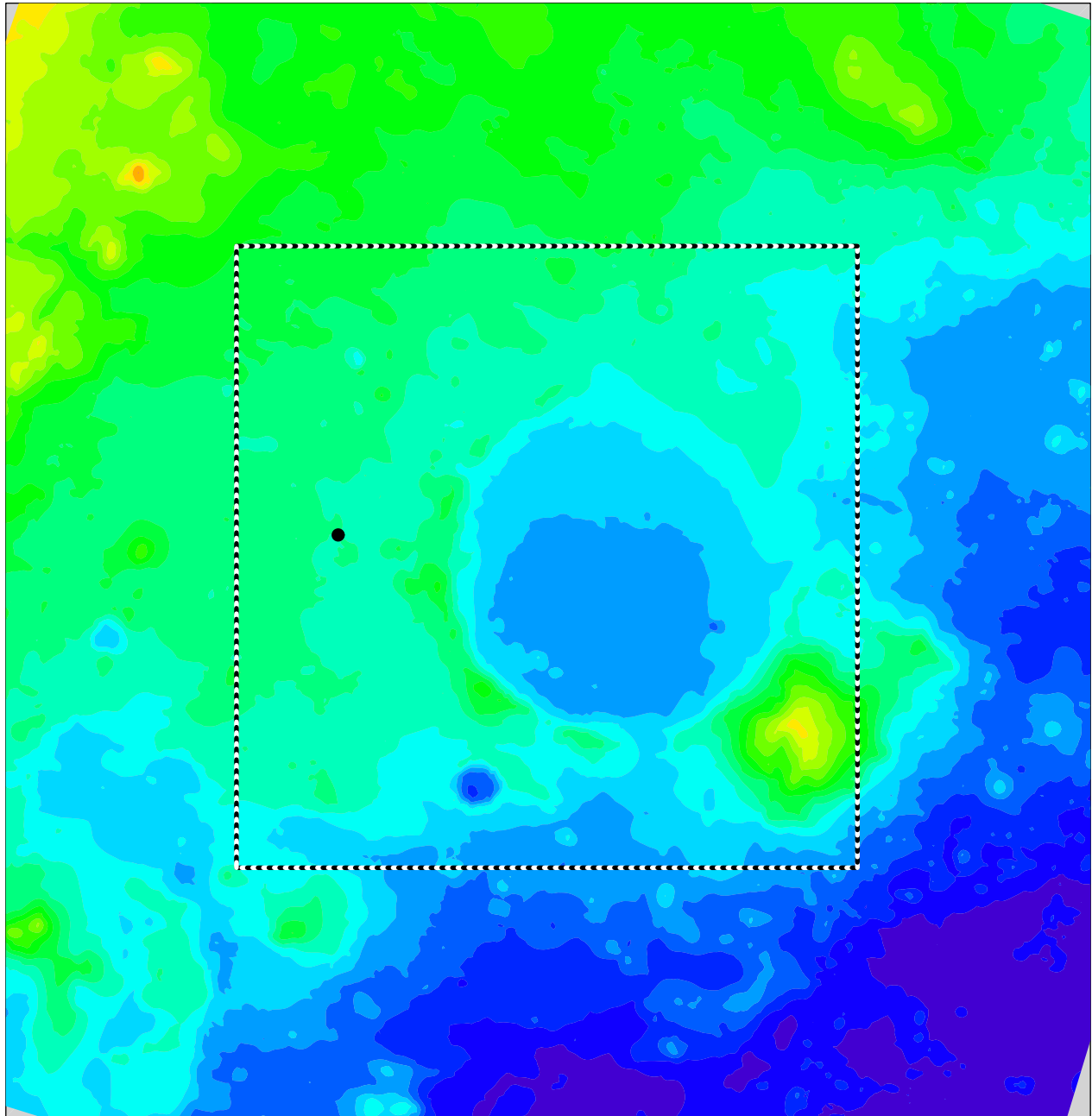


-4000 -3200 -2400 -1600 -800 0 800 1600



# Midway (grids 6 to 6)

topographic height above areoid m



-3600 -3000 -2400 -1800 -1200 -600 0