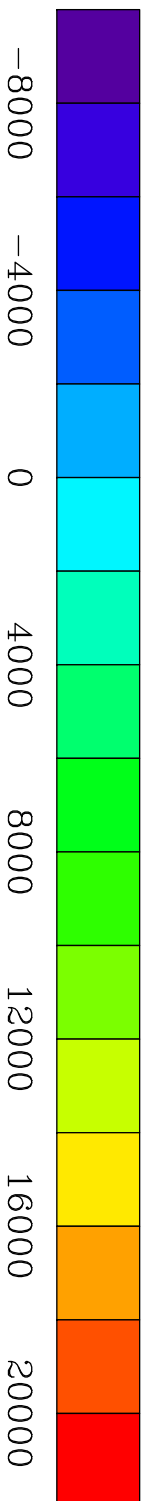
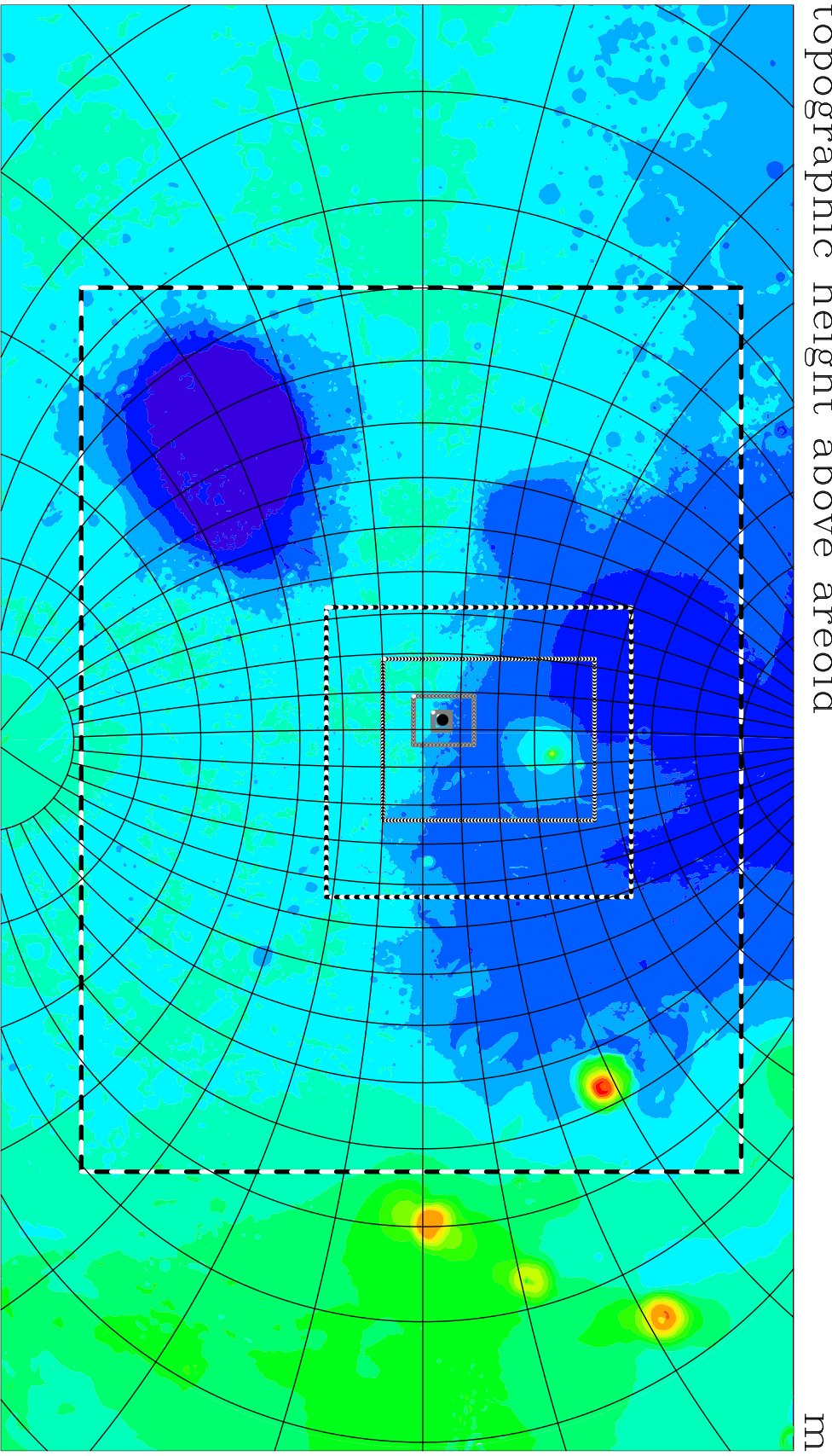
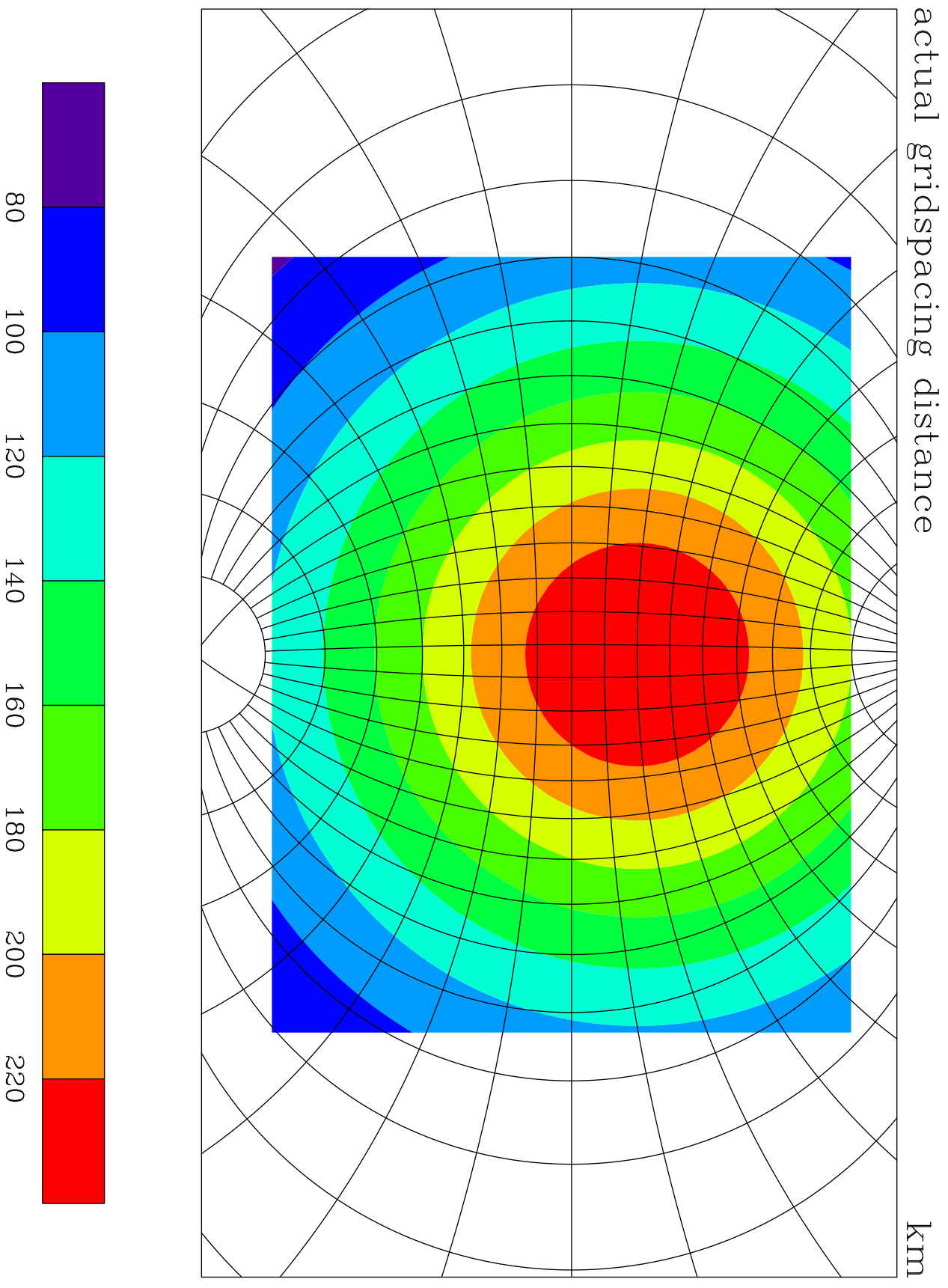


# Gale\_Ls0\_press\_tuned\_5march (grids 1 to 7)

topographic height above areoid

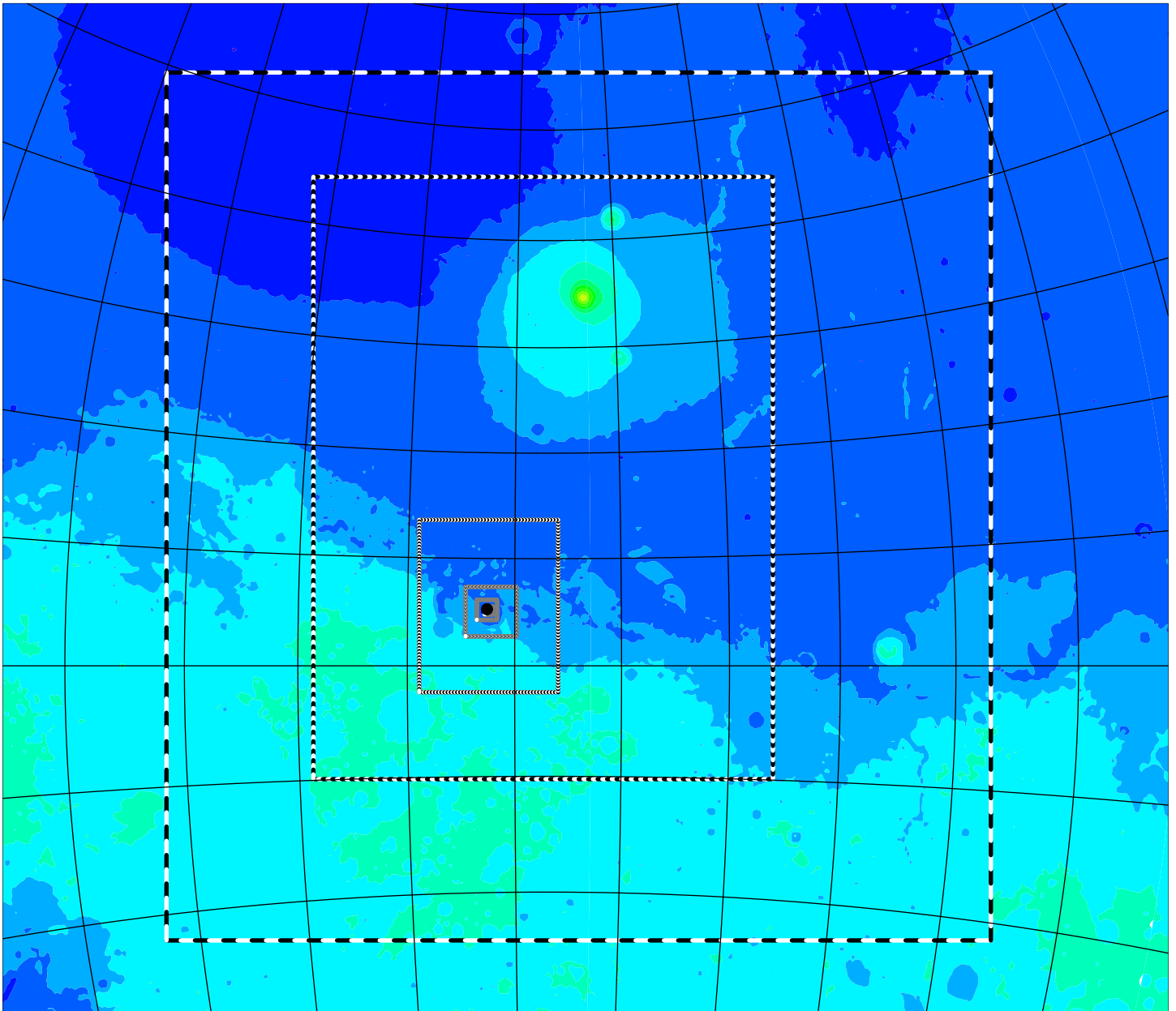


# Gridspacing distance variation on grid #1



# Gale\_Ls0\_press\_tuned\_5march (grids 2 to 7)

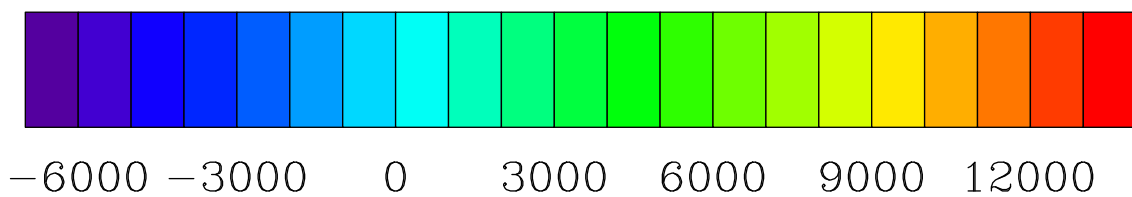
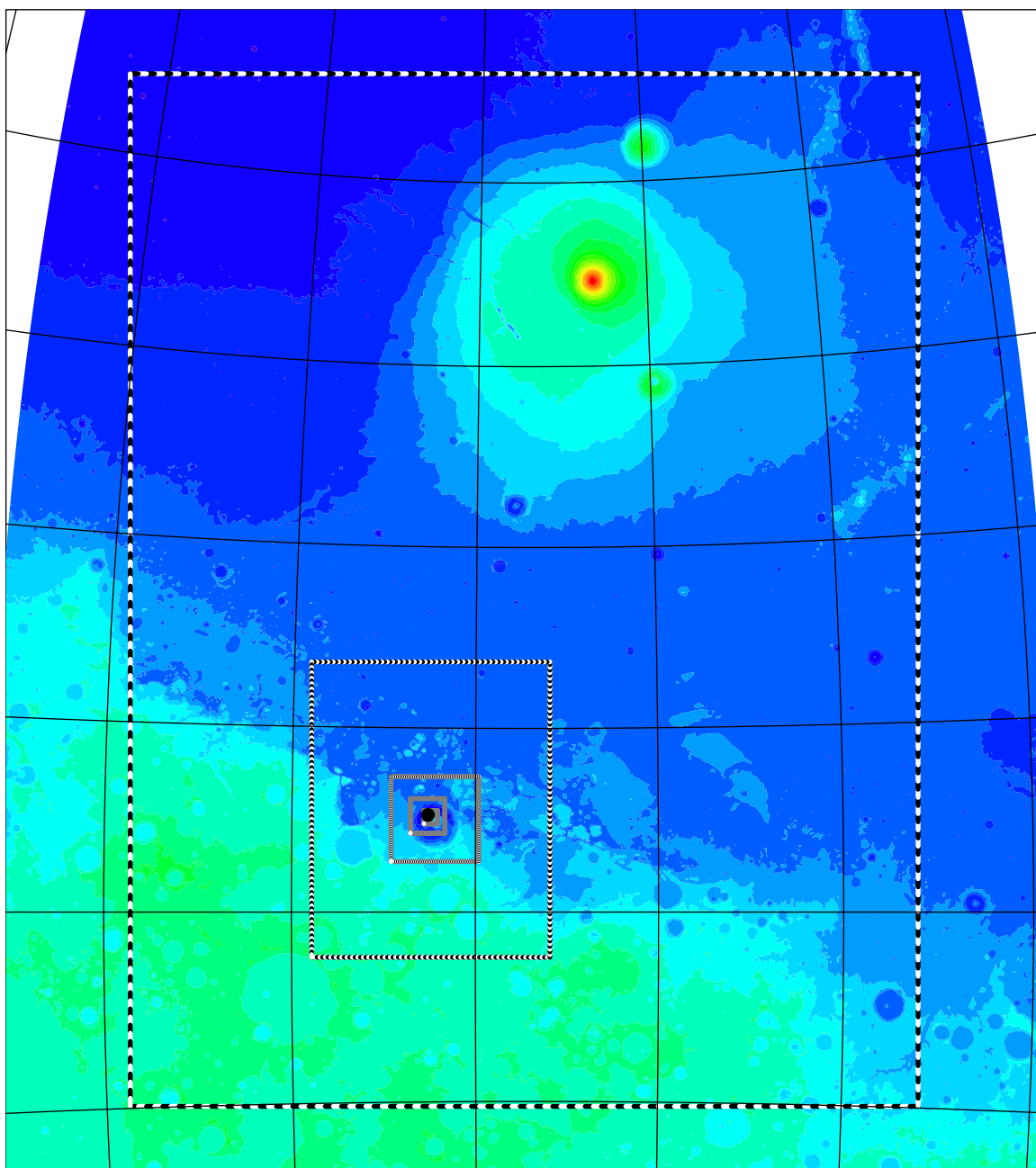
topographic height above areoid m



-8000 -4000 0 4000 8000 12000 16000 20000

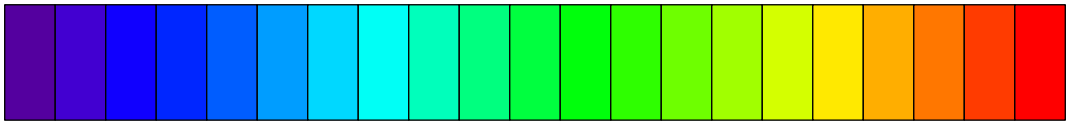
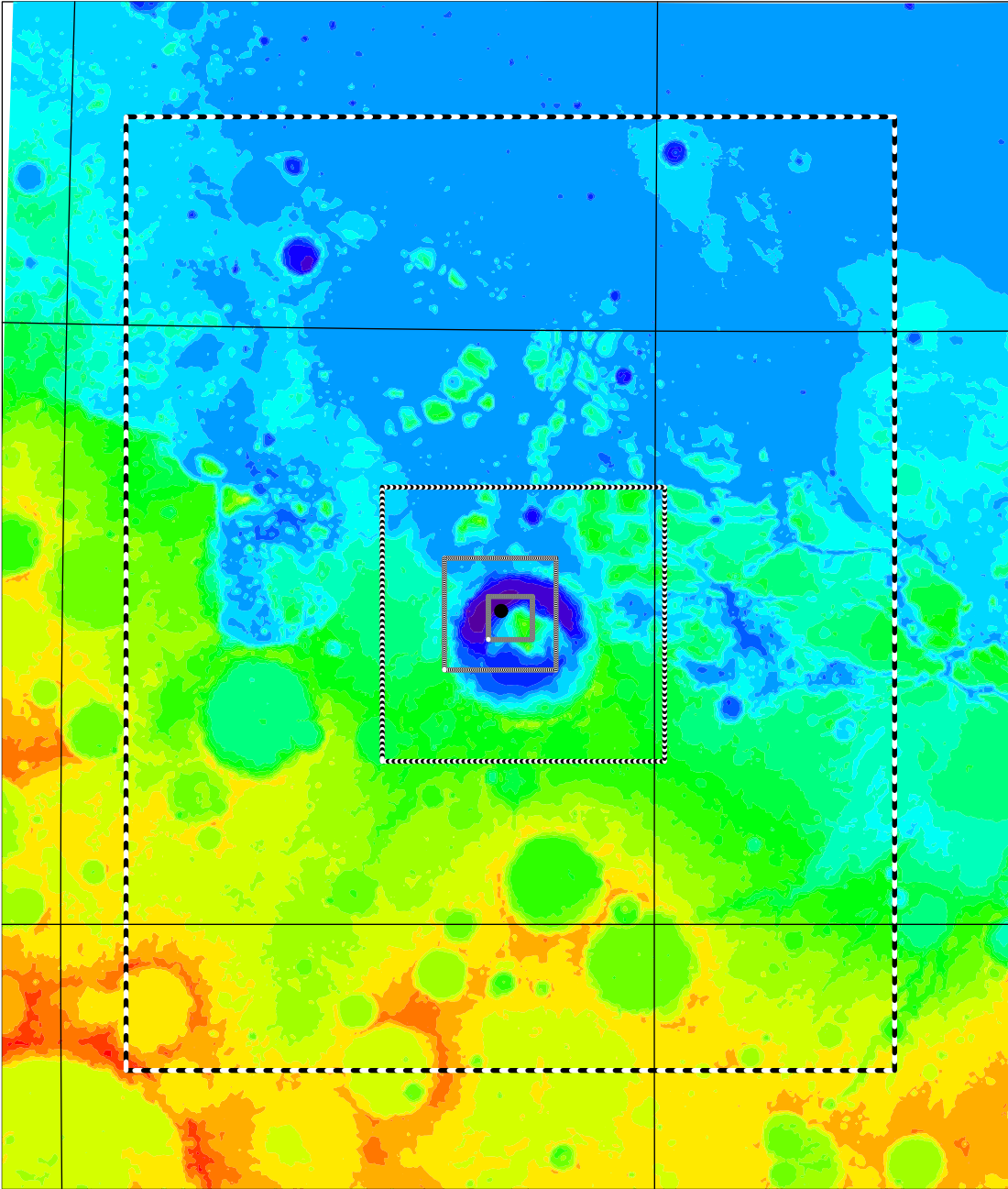
# Gale\_Ls0\_press\_tuned\_5march (grids 3 to 7)

topographic height above areoid m



# Gale\_Ls0\_press\_tuned\_5march (grids 4 to 7)

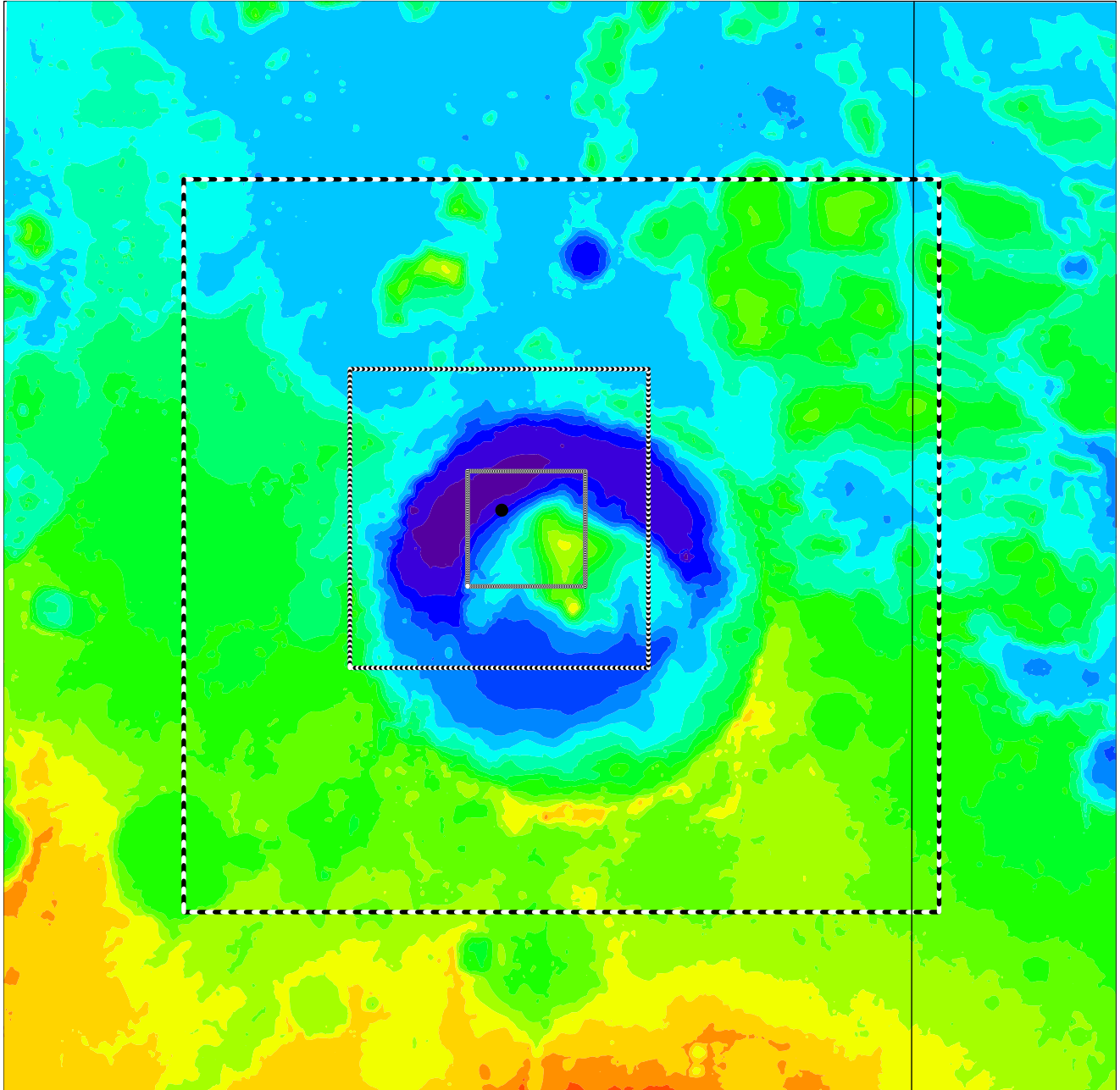
topographic height above areoid m



-3600 -2400 -1200 0 1200 2400

# Gale\_Ls0\_press\_tuned\_5march (grids 5 to 7)

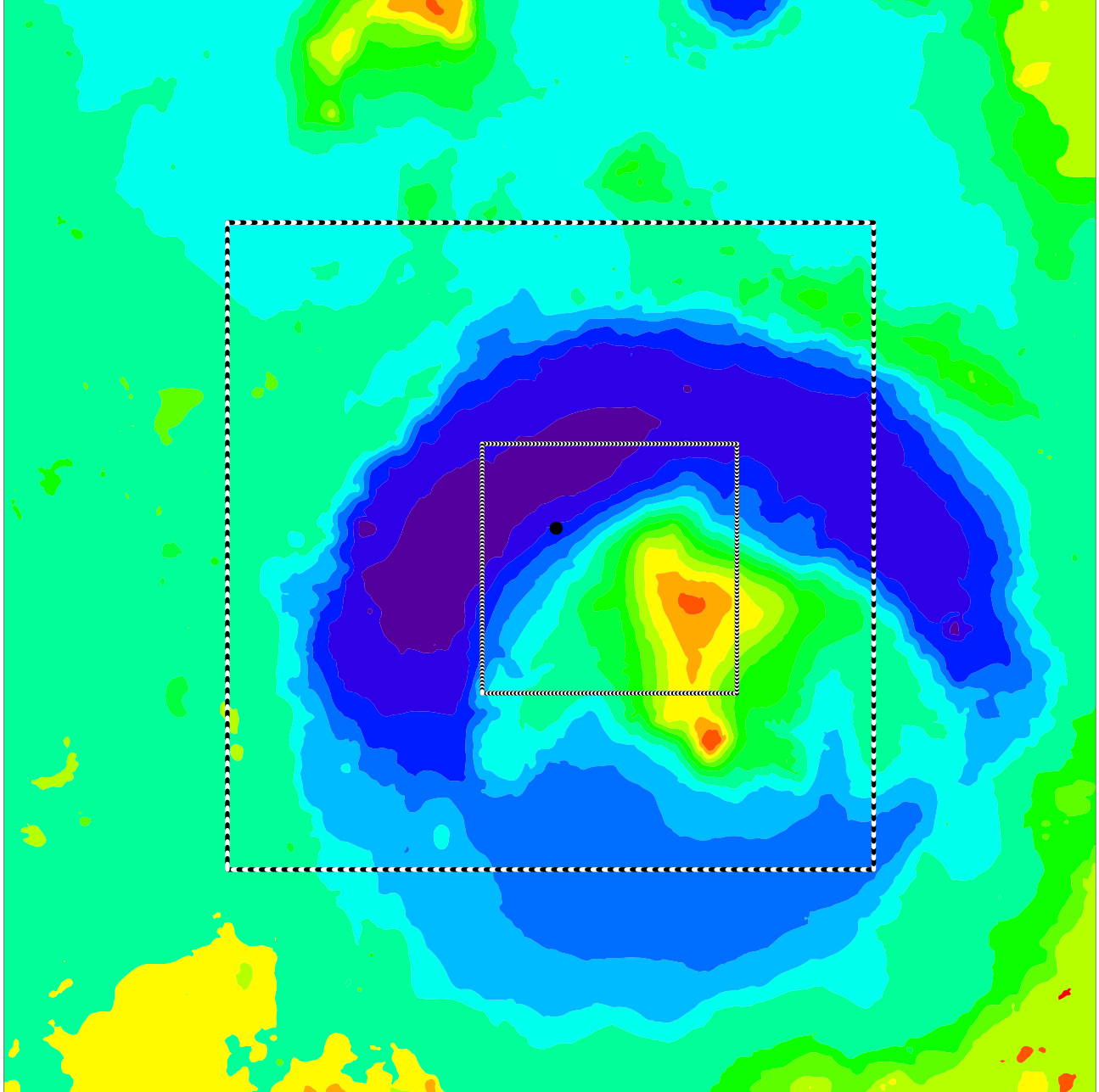
topographic height above areoid m



-3600 -2400 -1200 0 1200

# Gale\_Ls0\_press\_tuned\_5march (grids 6 to 7)

topographic height above areoid m



-3600

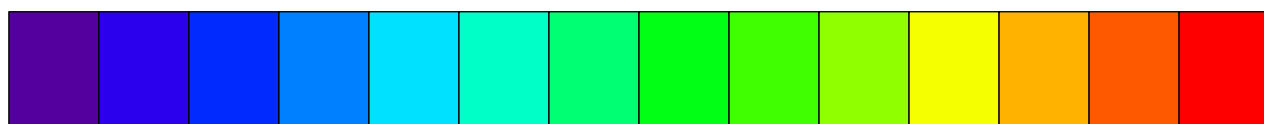
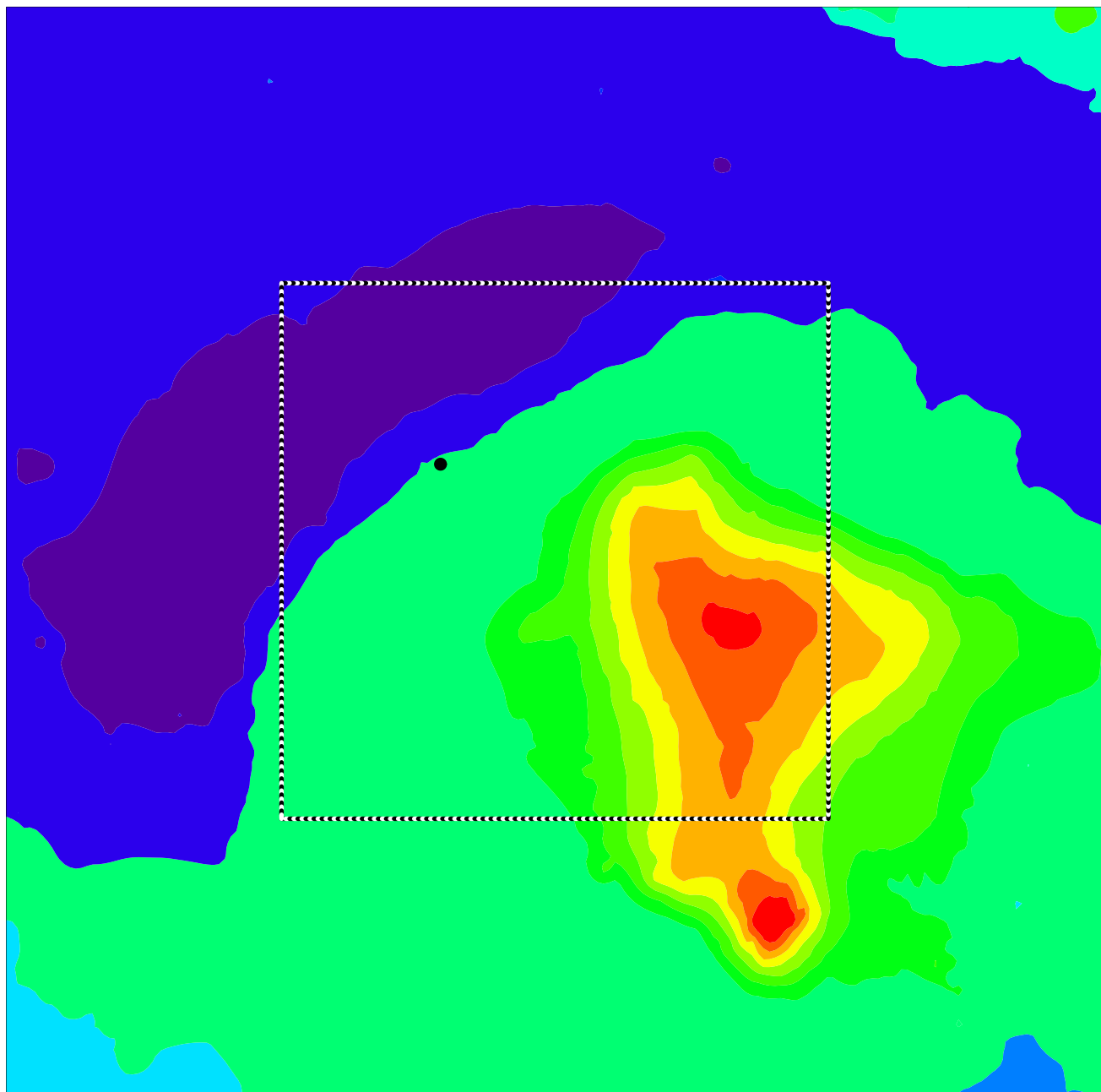
-2400

-1200

0

# Gale\_Ls0\_press\_tuned\_5march (grids 7 to 7)

topographic height above areoid m



-4000 -3200 -2400 -1600 -800 0