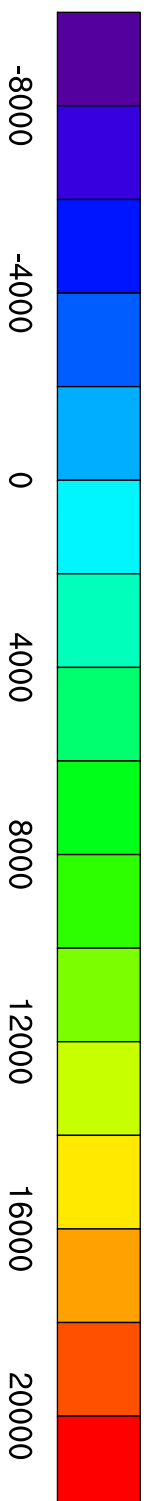
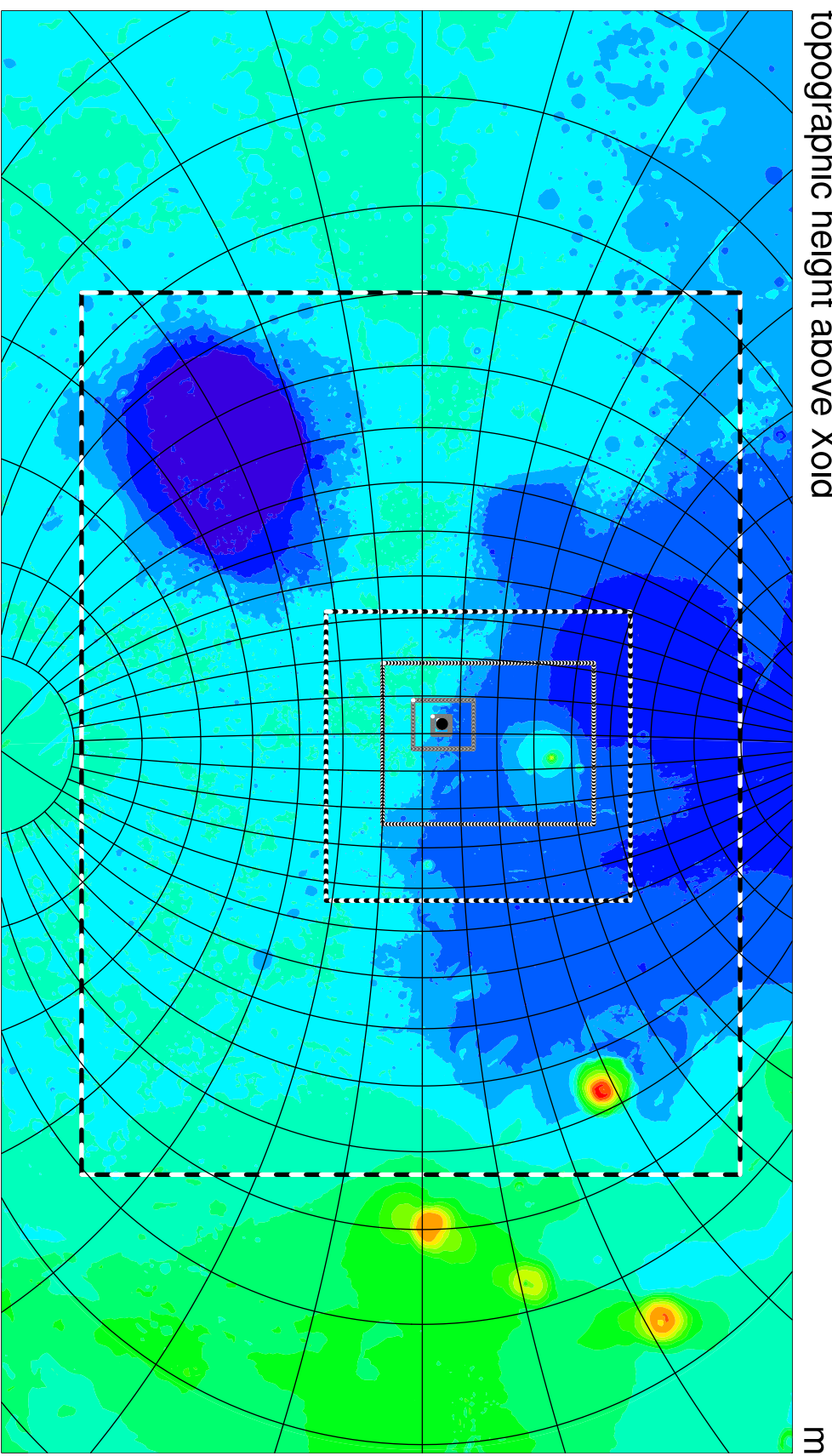


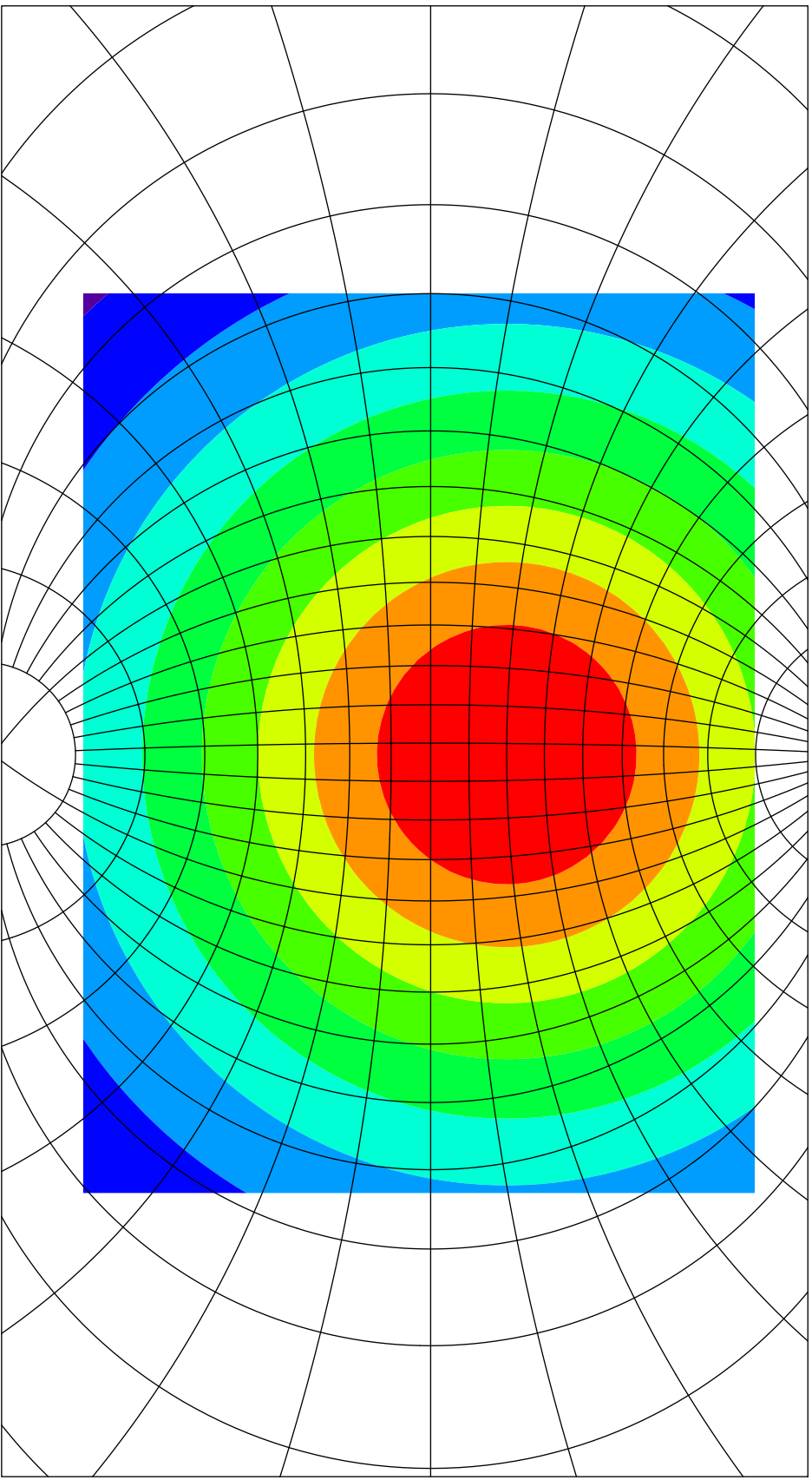
Gale_2024 (grids 1 to 7)

topographic height above Xoid



Gridspacing distance variation on grid #1

actual gridspacing distance

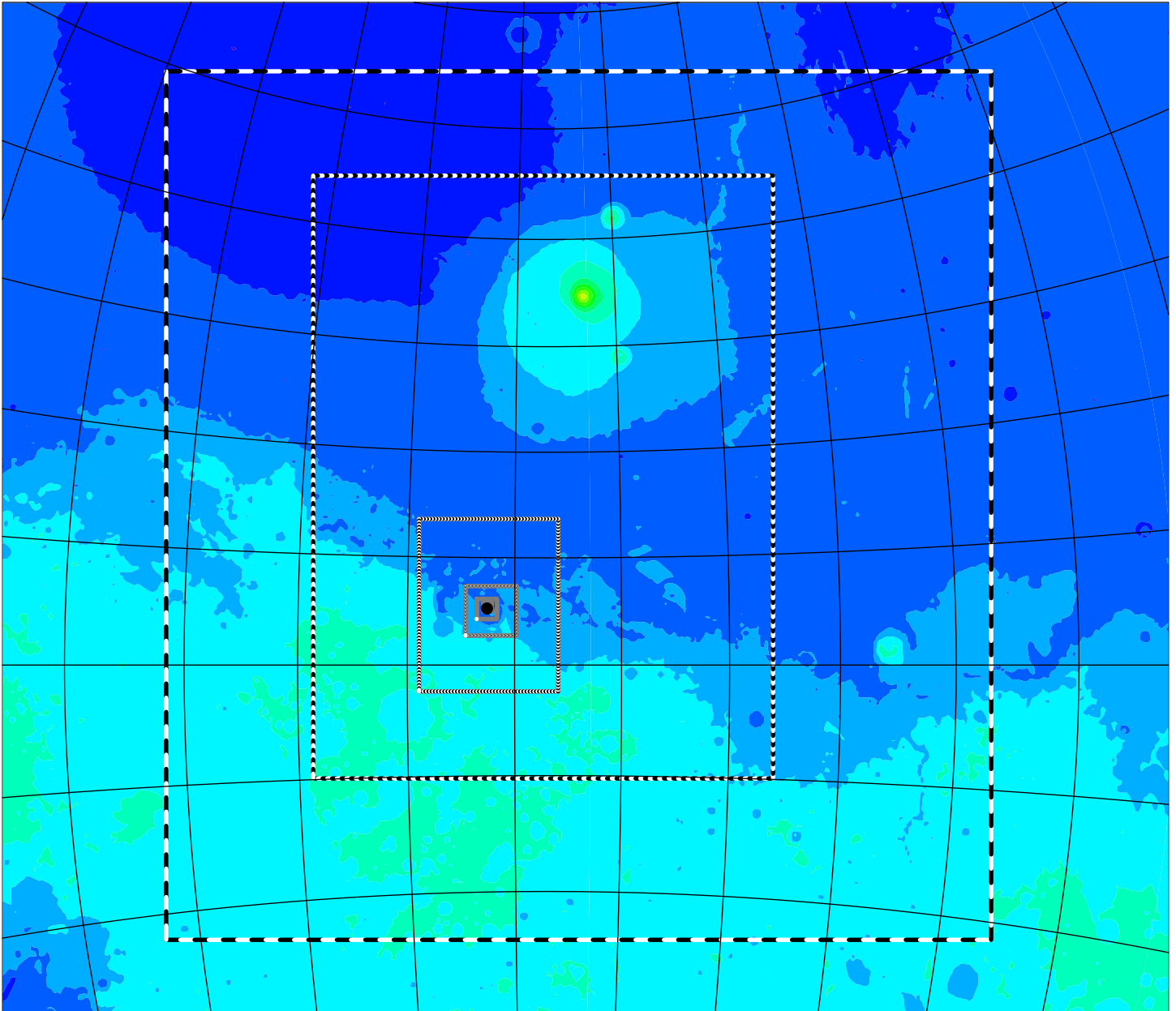


km

Gale_2024 (grids 2 to 7)

topographic height above Xoid

m



-8000

-4000

0

4000

8000

12000

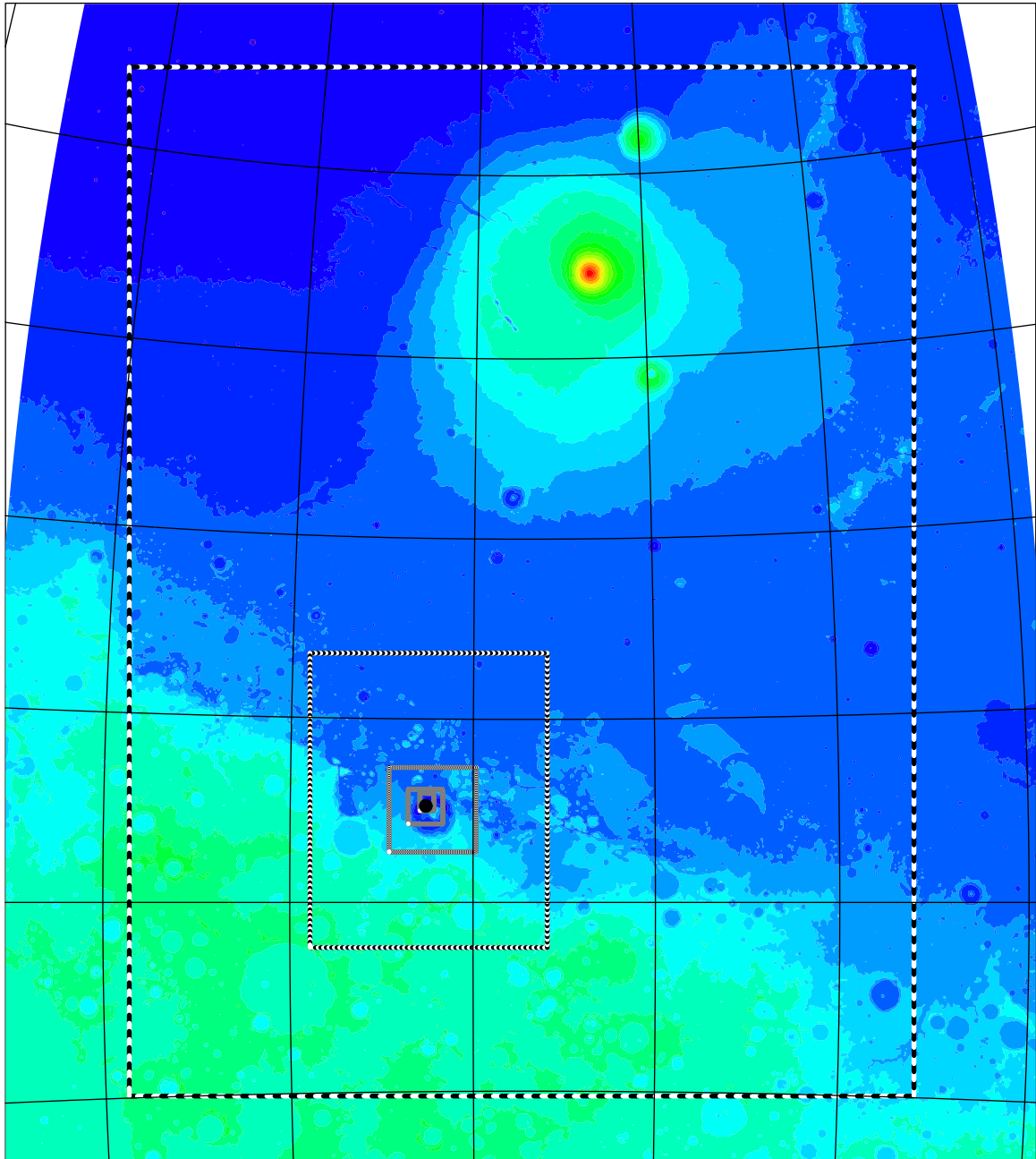
16000

20000

Gale_2024 (grids 3 to 7)

topographic height above Xoid

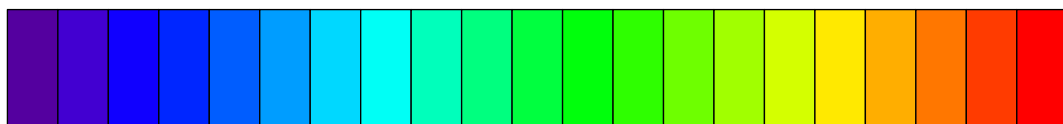
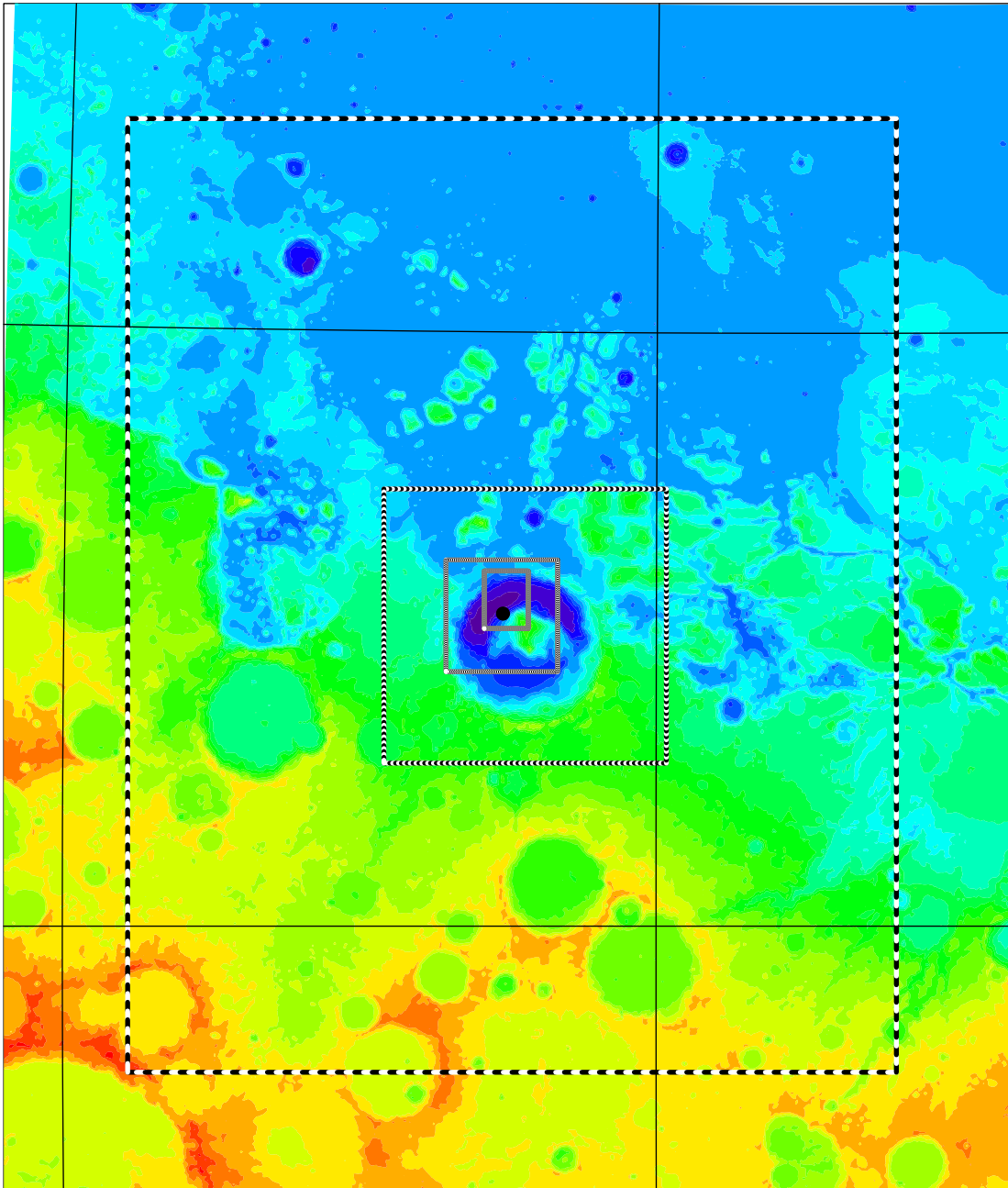
m



-6000 -3000 0 3000 6000 9000 12000

Gale_2024 (grids 4 to 7)

topographic height above Xoid m

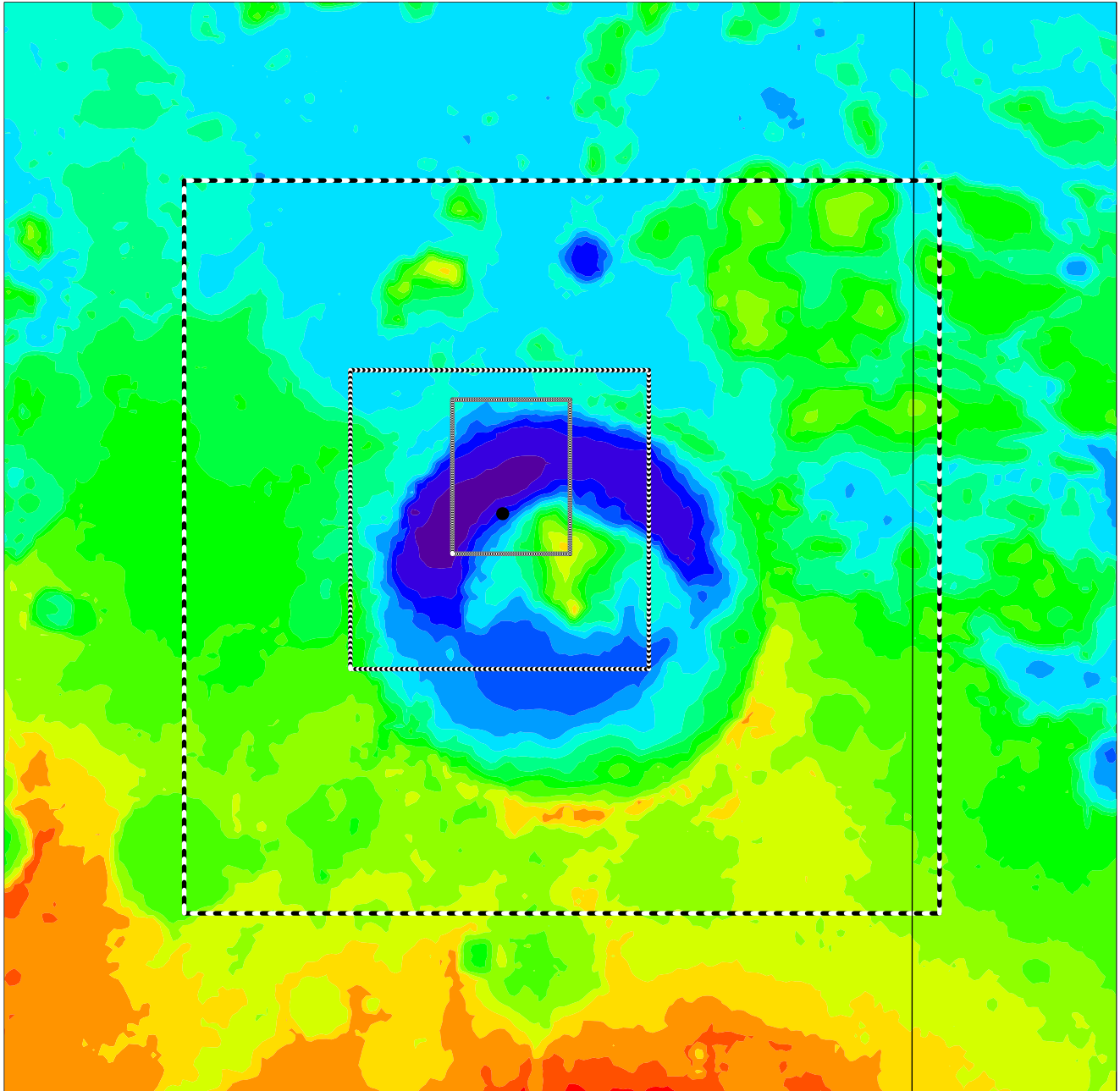


-3600 -2400 -1200 0 1200 2400

Gale_2024 (grids 5 to 7)

topographic height above Xoid

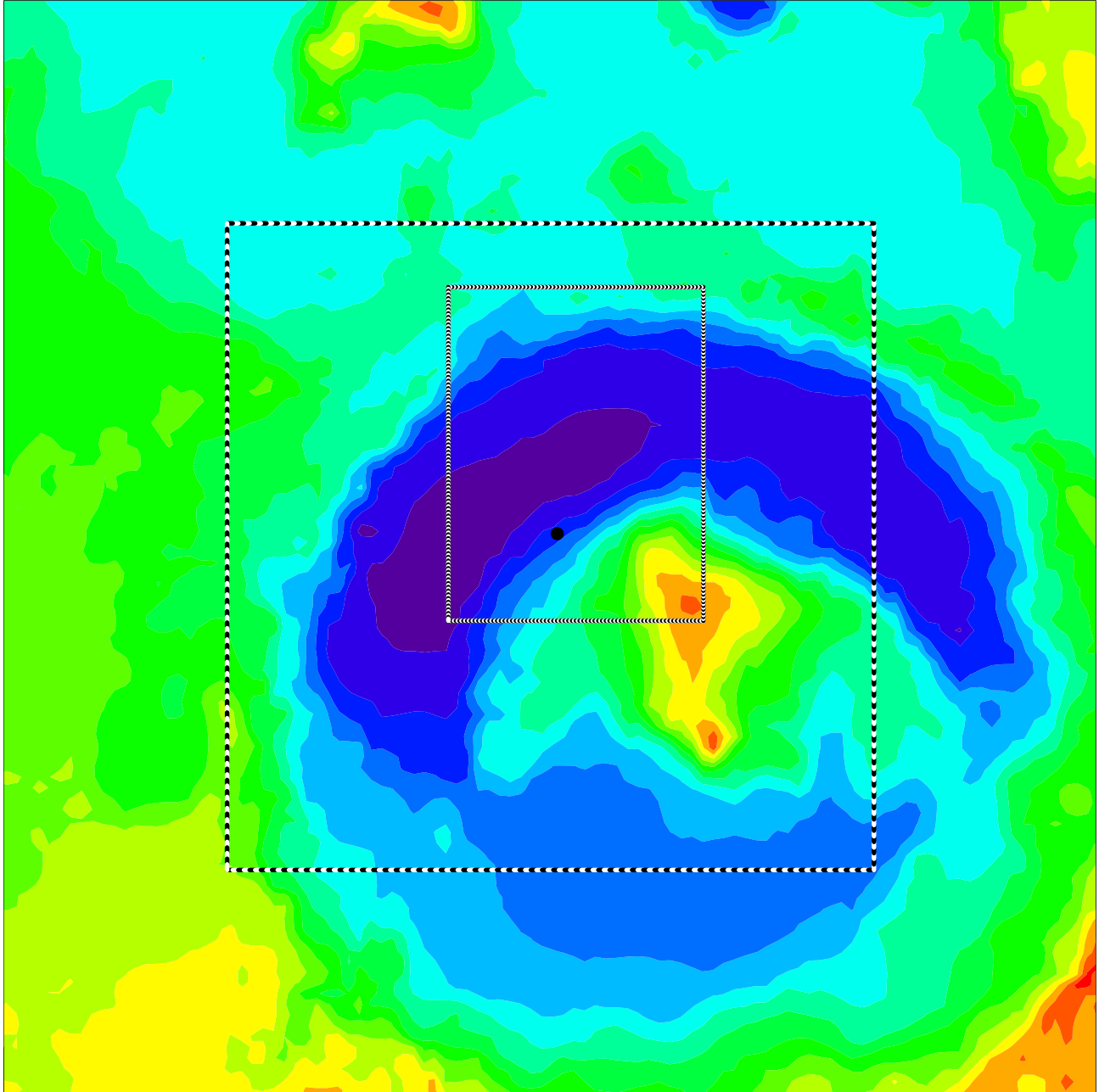
m



-4000 -3200 -2400 -1600 -800 0 800 1600

Gale_2024 (grids 6 to 7)

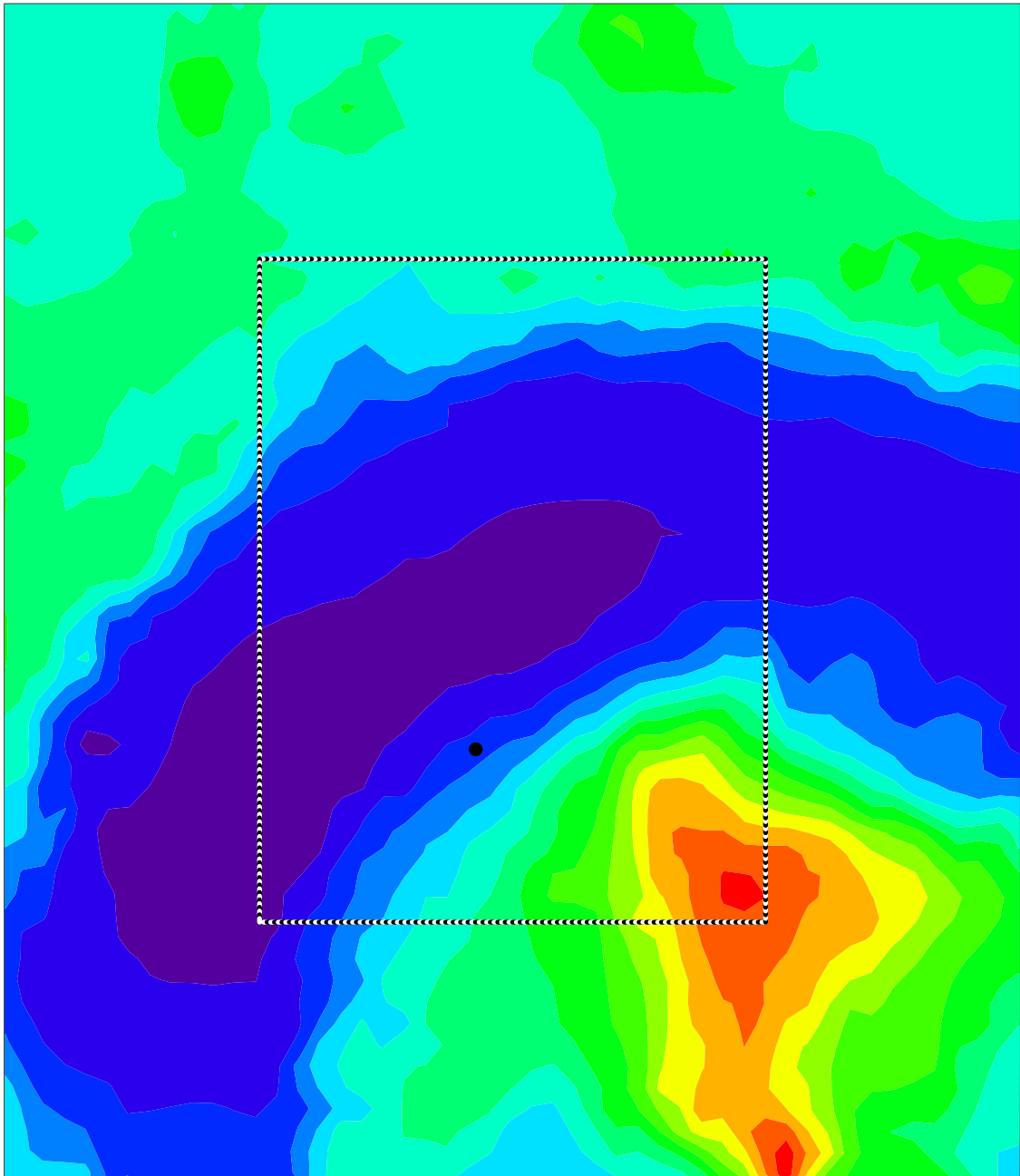
topographic height above Xoid m



-4000 -3200 -2400 -1600 -800 0 800

Gale_2024 (grids 7 to 7)

topographic height above Xoid m



-4000 -3200 -2400 -1600 -800 0